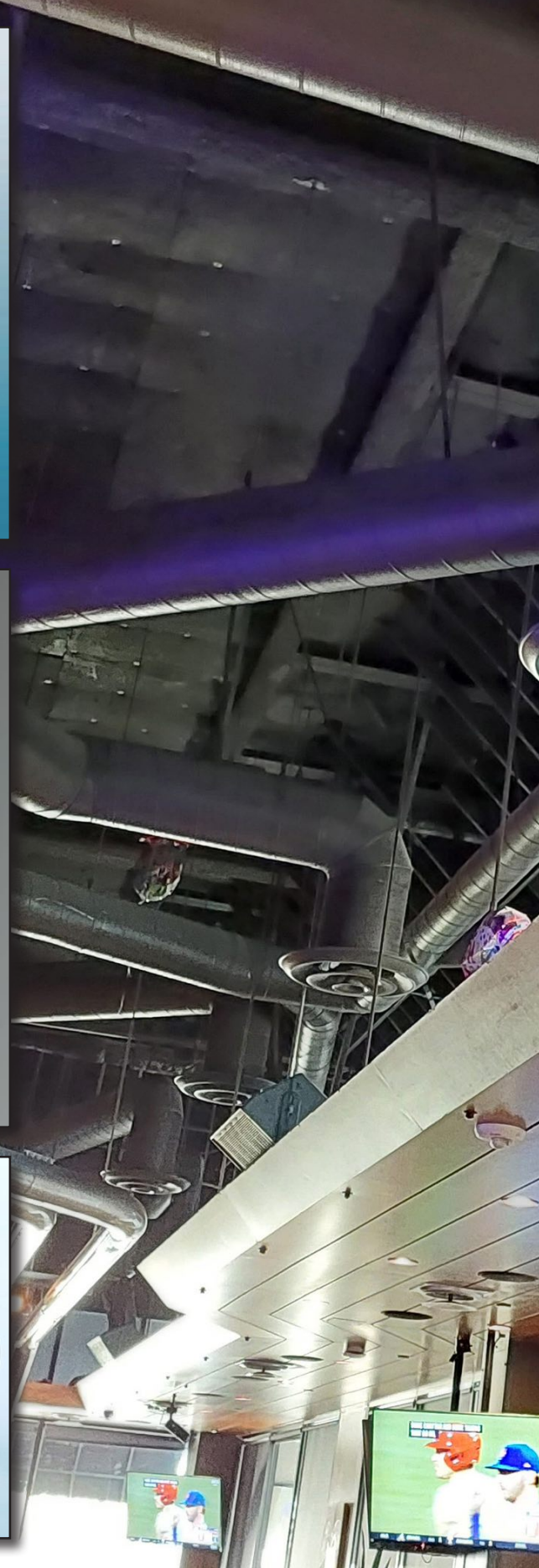
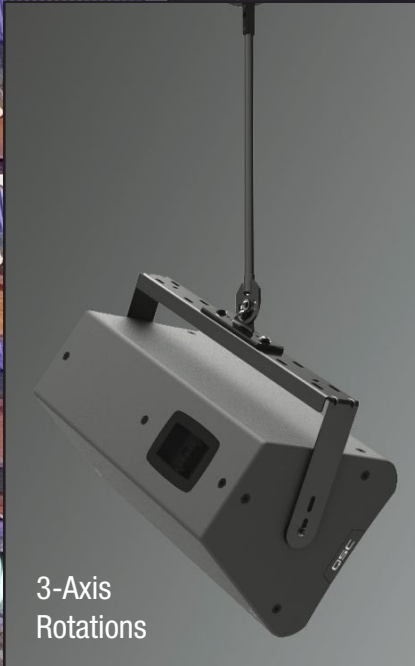


Loudspeaker Mounting Solutions



Mount to Any Vertical Structure

Mount to Any Horizontal Structure

Mount to Any Pole or Column

Adaptive Technologies has devoted the last 35 years to designing and manufacturing a wide selection of safe and easy to install mounting solutions for the Pro AV industry.

Adaptive uses the speaker's own mounting and rigging points to make installations fast and efficient.

Choose from these popular designs for your next installation.

Wall Mounts

For easy aiming conditions, use our single axis rotation U-Series™ and Adjustables™ speaker mount designs. For more expanded aiming needs, choose from our MultiMount® and SocketMount™ pan and tilt mounts. For special applications, such as immersive audio applications, select our three-axis RDX mounts. We even have outdoor models to choose from.

Ceiling Mounts

Every overhead and ceiling application is different so Adaptive created a variety of ceiling mounts and strut attachments that places and aims speakers from anywhere when accompanied with threaded pipe, all-thread and wire rope extensions. In addition, ceiling attachments, beam clamps and truss clamps are available with safety cable options.

Poles & Columns

Use any one of a wide range of pole mount designs to mount and aim loudspeakers to poles and columns for indoor audio fill applications such as convention centers or outdoors at large venues such as racetracks, ball fields and retail centers. PoleStar® offers both indoor and outdoor mounting solutions that make their installations easy to install, safe and predictable.

StarGrid™ Immersive Installation Systems



Performing Arts Theaters

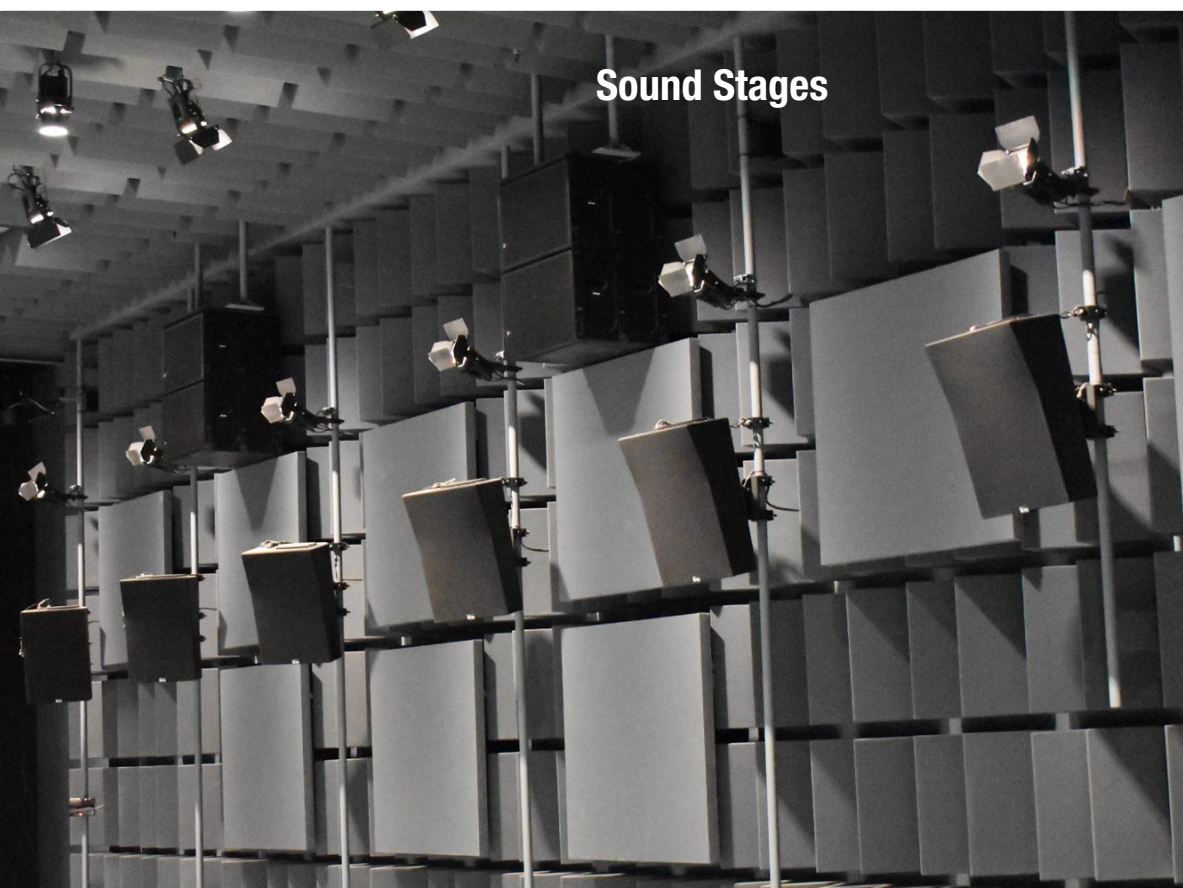


Post-Production Studios

StarGrid™



Cinema Auditoriums



Sound Stages

StarGrid™

Whether it be a multi-use performing arts theater, post production studio or cinema complex, proper Immersive audio starts with the proper aiming of loudspeakers.

Safety, precise aiming and sound isolation are all keys to creating a great sounding immersive audio venue. StarGrid™ provides the perfect installation solution.

Wall Surrounds

Adaptive's wide selection of wall mount options combine precise aiming, efficient installation time and safe load ratings to direct sound into the desired "sweet spot".

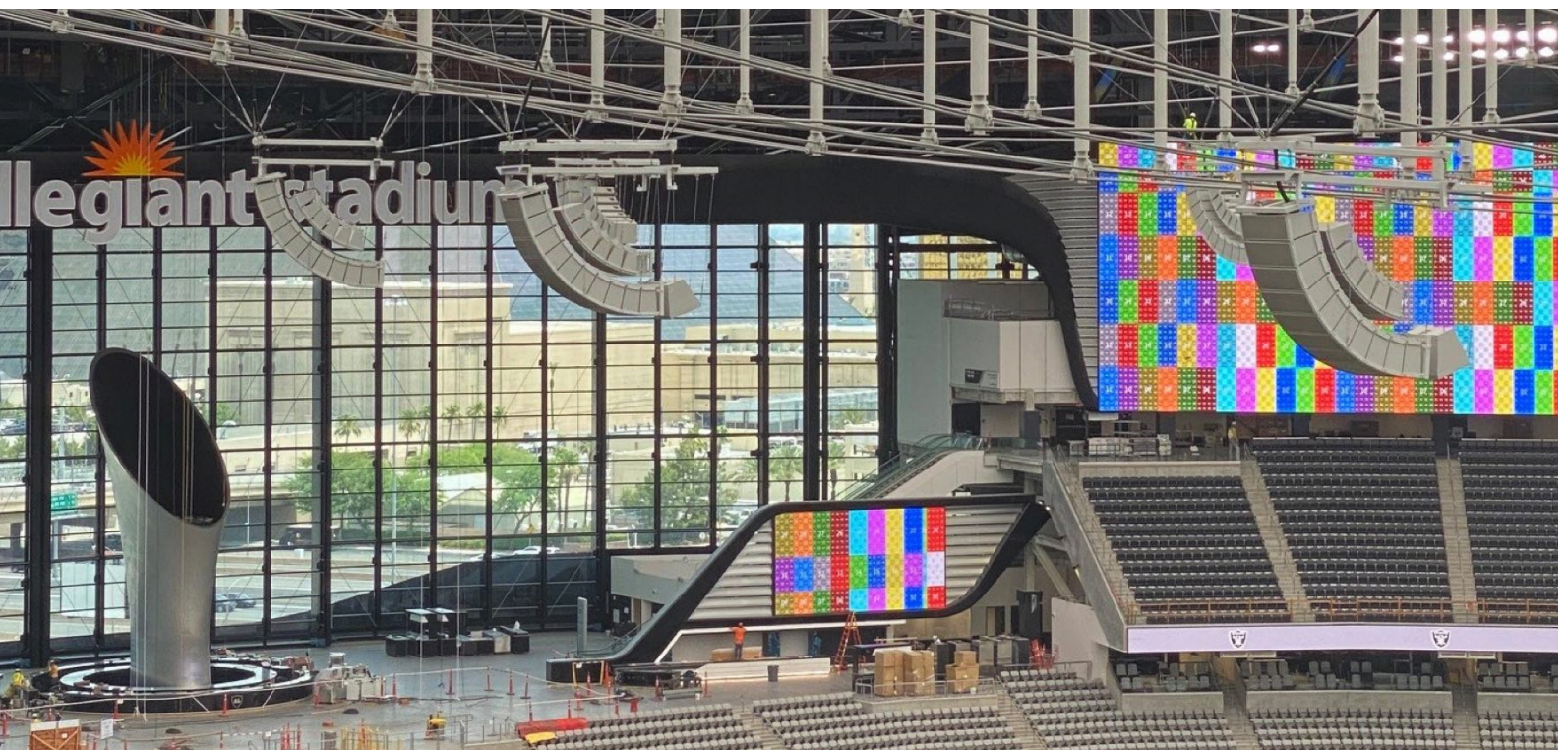
Our simple U-Series brackets mount to a speaker's side mounting points, are easy to install and offer sound isolation and a locking down-tilt. MultiMount® pan & tilt models mount from the rear or bottom of the speaker using its four mounting points.

Overhead Surrounds

What goes up - must stay up! StarGrid™ employs a combination of 3-axis speaker mounts, overhead grid components and ceiling anchors that aims speakers into their exact specified position, provides redundant safety features and reduces sound that can travel into adjacent rooms.

When CAD files of the theater are provided, Adaptive will produce an installation manual for the Installation Crew.

Loudspeaker Rigging Solutions



Custom Rigging for Any Venue



Universal
Grid



Planar
Clusters



Sub Cluster
Frames



Loudspeaker Rigging Solutions

Adaptive offers an unlimited range of off-the-shelf rigging options, from single speaker side fills using our Steerables® designs to full clusters using GridLink® or FasPac™.

Adaptive also builds custom grids and rigs for some of the largest venues in the world.

Our simple four-step process includes; Design, Design approval, Structural calcs (optional) and Fabrication.

Custom colors are available, as is optional on-site support.



Video Walls & Trolley Systems



Ground Supported and Overhead Trolley Systems



Command and Control

Permanently Installed - Video Wall Frames & Displays

Adaptive provides an unlimited range of custom and easy to assemble video wall frames, displays and trolley systems for both indoor and outdoor applications. There is no limit to size.

Adaptive's designers solve for LCD and LED monitors for ground supported, overhead and wall mounted applications.

Our simple four-step process includes; Design, Design approval, Structural calcs (optional) and Fabrication.

Custom colors are available, as is optional on-site support.



Architectural Applications

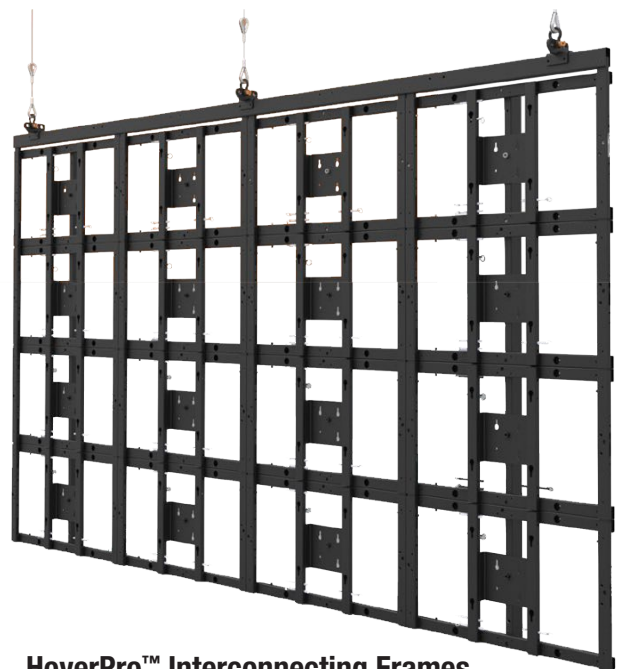
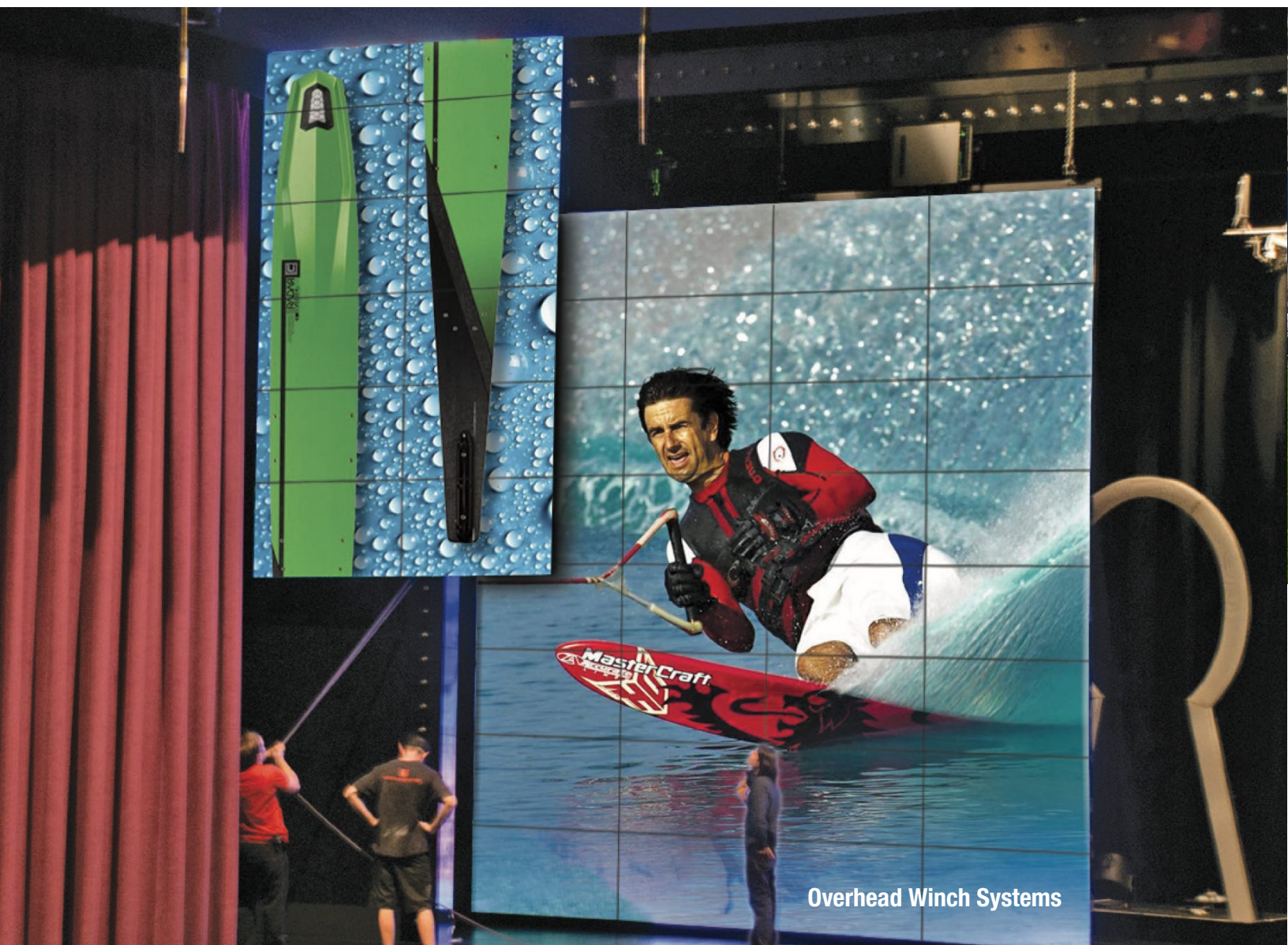


**Metro
Displays**

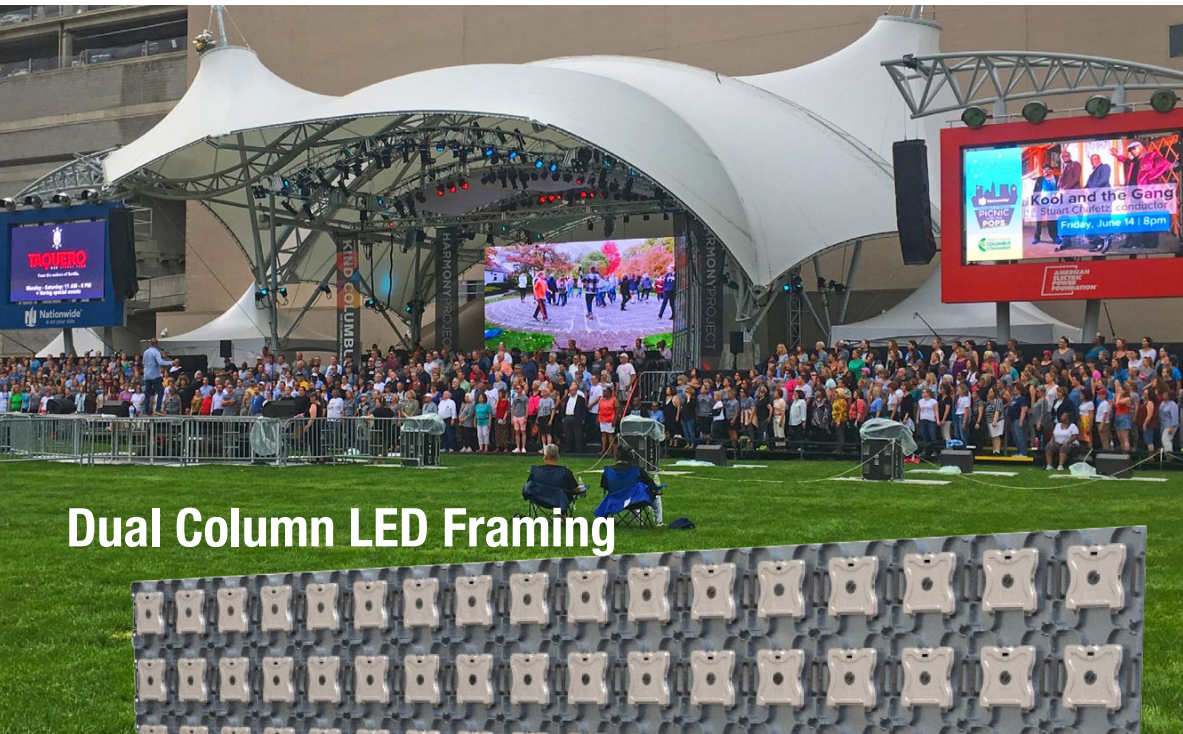


Pre-Fit Process

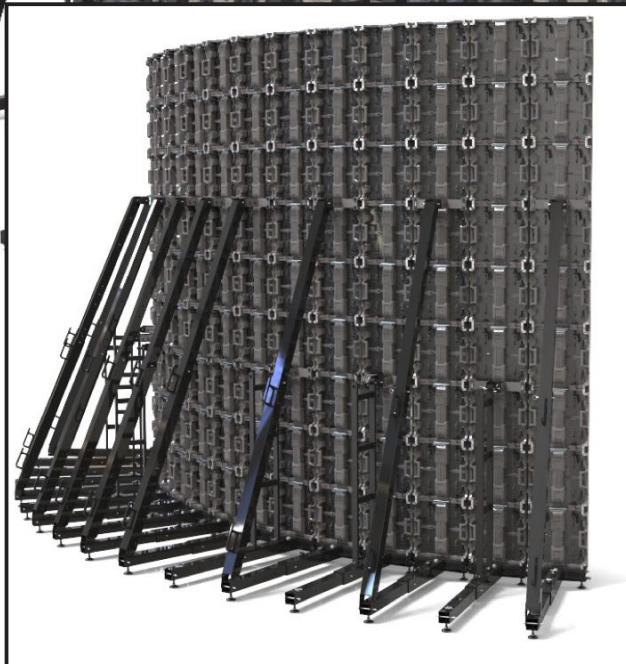
Touring / Live Events Video Wall Frames



Portable Video Wall Ground Support Systems



Dual Column LED Framing



Single Column LED Framing

**Rolling
Equipment
Cart**



Loc-n-Load®
Ground Support System

Live Events & Touring - Video Wall Frames & Grids

Adaptive offers easy to assemble overhead, wall mounted and ground supported video wall framing for temporary use, such as at live events, conventions and multi-use venues.

Choose from the popular Loc-N-Load® LED ground support system that comes with an optional rolling cart.

To temporarily wall mount LCDs or LEDs into any configuration, select GridLink®.

Rig up any size video wall safely from overhead using our HoverGrid™ and HoverPro™ designs.

Projector Lifts, Frames and Enclosures

Pro-Lift™

Pro-Lift™ Projector Solutions

Adaptive designs and produces a wide range of lifts, enclosures and rigging frames for large format laser and xenon lamp projectors.

The Pro-Lift™ product line includes wall mounted vertical lifts, overhead scissor lifts, stackable rigging frames for live events and self-ventilated sound isolated enclosures. Many of these can be networked with show controllers.



Projector Wall Lifts and Enclosures



Stackable Projector Frames



Networkable Scissor Lifts

In-House Design & Manufacturing



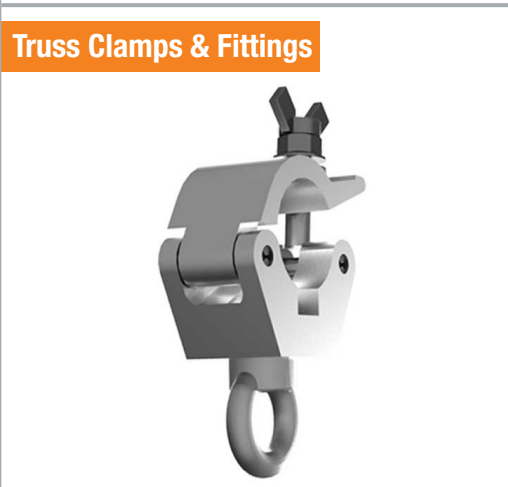
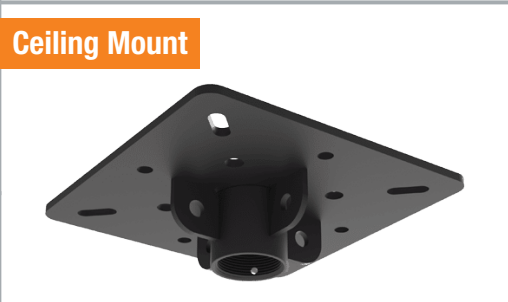
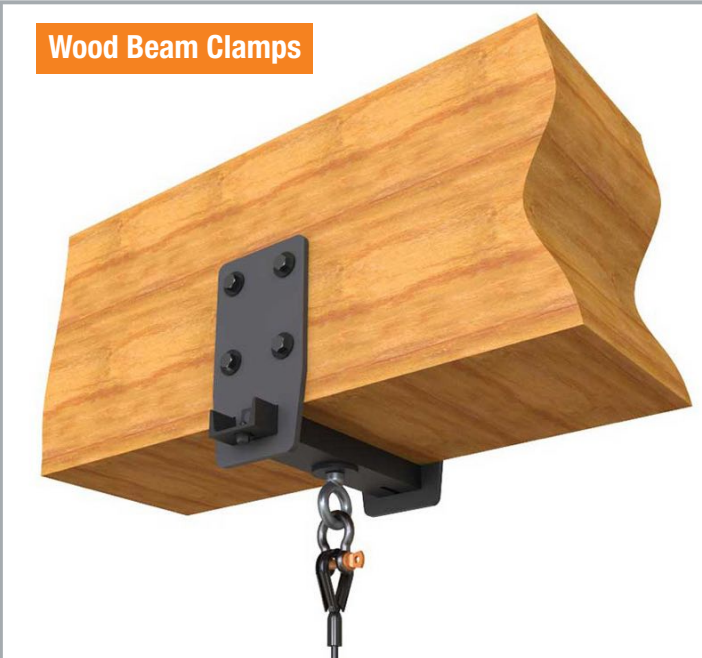
The Adaptive Advantage

In addition to creating Adaptive's many proprietary products, we offer OEM and private label programs from design to manufacturing to assembly to pack out.

All designs are created here in our Southern California Engineering department and manufacturing is conducted on-site using our state-of-the-art CNC machinery and software. Our primary software includes Solidworks and Autocad.



Load-Rated Rigging Hardware



Rigging Wire Rope Assemblies



Safety Cables

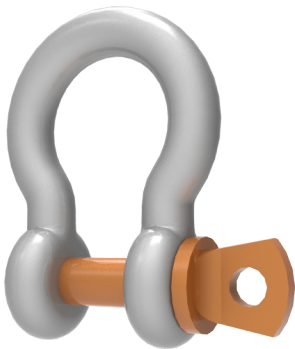


Overhead Mounting Hardware

Save time and let Adaptive's application specialists help you find everything needed to complete your installation, all shipped to the job site.

Most of the items listed here are in stock and available in black or silver color.

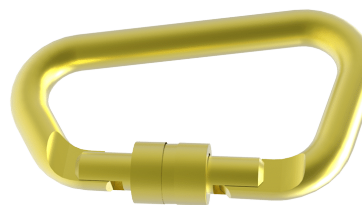
Shackles & Turn Buckles



Turn Buckles



Eye Bolts, Eye Nuts & Links



SALES & DISTRIBUTION

NORTH AMERICAN AUDIO

MIDWEST

Full Compass
800-356-5844
www.fullcompass.com

MIDATLANTIC

Dale Pro Audio
888-462-7828
www.daleproaudio.com

SOUTHWEST

Proaudio.com
800-433-2105
www.proaudio.com

WESTERN PACIFIC

EDC
(800) 767-9553
www.e-d-c.com

SOUTHEAST

BAI Distributors, Inc
888-224-3446
www.baionline.com

EUROPEAN SALES & DISTRIBUTORS

UK - PRO AUDIO & VIDEO

Amber Sound
(T) +44 (0) 1707 644442
www.ambersound.co.uk

EUROPE - PRO AUDIO & VIDEO

Cinemanext S.A.
Tel: +32 4 364 1200
www.cinemanext.com

CINEMA SOLUTIONS

Cinemanext S.A.
Tel: +32 4 364 1200
www.cinemanext.com

MIDDLE EAST & AFRICA SALES & DISTRIBUTORS

PRO AUDIO & VIDEO

Cinemanext S.A.
Tel: +32 4 364 1200
www.cinemanext.com

CINEMA SOLUTIONS

Cinemanext S.A.
Tel: +32 4 364 1200
www.cinemanext.com

SOUTH AMERICAN SALES & DISTRIBUTORS

PRO AUDIO & VIDEO

Adaptive Technologies Group
Tel: +1 562-424-1100
www.adaptivetechologiesgroup.com

CINEMA SOLUTIONS

Adaptive Technologies Group
Tel: +1 562-424-1100
www.adaptivetechologiesgroup.com

ASIA SALES & DISTRIBUTORS

PRO AUDIO & VIDEO

Adaptive Technologies Group
Tel: +1 562-424-1100
www.adaptivetechologiesgroup.com

CINEMA SOLUTIONS

Adaptive Technologies Group
Tel: +1 562-424-1100
www.adaptivetechologiesgroup.com

EAST COAST OFFICE

1007 N. Market Street, Suite 165
Wilmington, DE 19801



ADAPTIVE
TECHNOLOGIES GROUP

1635 East Burnett Street • Signal Hill, CA USA 90755

+1-562-424-1100

www.adaptivetechologiesgroup.com

info@adaptivetechologiesgroup.com