

# HP-400P

# Fly LCDs Up To 39"

# 300 lb WLL

## ADJUSTABLE LCD MONITOR RIGGING FRAME

## HoverPro™



Low Profile Rigging Kit

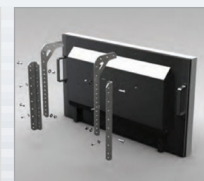
Fly LCDs out in front of your audience from HoverPro, when wall mounting LCDs or floor supported kiosks aren't practical. Save space and permanently display video content above your audience by suspending and aiming LCD monitors from any overhead structure.

HoverPro frames are height adjustable and pre-engineered to safely and easily suspend LCDs from their rear VESA mounting holes. Set the desired down tilt angle by selecting from multiple suspension points. Use the dimensions below to select the HoverPro model based on the monitor's vertical or horizontal orientation and its VESA mounting pattern.

When a pan angle is also necessary, suspend the HoverGrid and LCD from under one of a variety of Steerables® One-Way-Array rigging systems.



Portrait Orientation



Landscape Orientation

### KEY FEATURES:

- ▶ Places monitors overhead, saving floor space
- ▶ Adjusts into horizontal and vertical configurations
- ▶ Attaches to standard VESA mounting holes
- ▶ Quick, permanent, low profile installation

### OPTIONAL ACCESSORIES:

- ▶ Aircraft wire rope assemblies in various standard lengths.
- ▶ Shackles, Turnbuckles and load rated hardware.
- ▶ Beam Clamps and Truss Clamps (load rated).
- ▶ One-Way-Array – Time-saving horizontal aiming device.



### Steerables® One-Way-Array®

An optional horizontal aiming device, the One-Way-Array, may be installed in-line, above the HoverPro, to provide up to a full 360 degrees of aiming rotation.

Additionally, a wide variety of standard off-the-shelf rigging hardware is also available to allow the installer to safely assemble and hover the LCD or plasma monitor at any desired height and angle above an audience.

### SPECIFICATIONS:

**Material :** Steel plate

**Finish:** Powder coat

**Color:** Black

**WLL:** 300 lb / 136 Kg

### PACKAGE CONTENTS:

**1 pair** Boom Suspension

**1 pair** Mounting Rail,

**1 pc** Hardware Kit

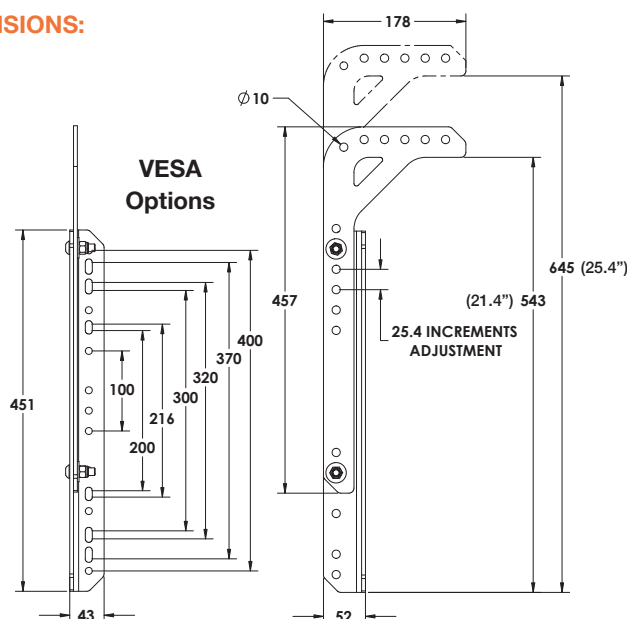


MADE IN USA



Rated for indoor use.

### DIMENSIONS:



### ALWAYS INSTALL SAFETY CABLES

**WARNING:** Mounting and/or suspension of equipment requires experienced professionals. Improperly installed equipment can result in property damage, personal injury and/or liability to the installing contractor.

### Adaptive Technologies Group

1635 E. Burnett Street | Signal Hill, CA 90755 USA

Ph: 562.424.1100 | Fax: 562.424.3520

www.adaptivetechgroup.com

