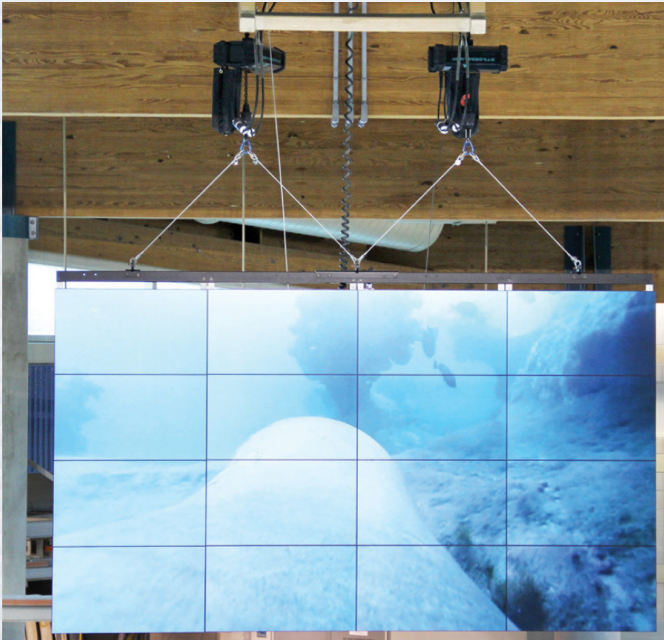


# ATG-SR05

1/2 TON LIFT SYSTEM

115V CHAIN HOIST AND ELECTRICAL COMPONENTS

**Pro-Lift™**



4X4 LCD Video Wall

Designing overhead video walls and clusters of loudspeakers into large facilities requires lifts and heavy rigging to complete a permanent installation and is expected as part of the overall project cost. Servicing them at a future date is less predictable and often times it is not practical or even possible to get a lift back into the installation area. Other installations require multiple height positions, such as in sporting venues and entertainment venues.

In these cases, equipping the video wall or speaker cluster with its own hoist system allows the entire rig to go up and come down at the push of a button. Let Adaptive engineer the hoist and electrical system to build in height flexibility and assure trouble-free service and maintenance.

Breakout Box



Service Panel by others

Electrical Components

## STANDARD FEATURES:

- ▶ Smooth and quiet up and down action
- ▶ Wall Switch or hand held control options

## OPTIONAL ACCESSORIES:

- ▶ See Rigging Components datasheet
- ▶ 20' Chain ATG-SR05-CHN-20
- ▶ 30' Chain ATG-SR05-CHN-30
- ▶ 40' Chain ATG-SR05-CHN-40
- ▶ 50' Chain ATG-SR05-CHN-50

## SPECIFICATIONS:

**Weight:** 88lb / 40kg

**WLL:** 1/2 Ton

Secondary Brake

**Design Factor:** 5:1 ratio

**Suspension:** Rigging Chain

**Chain Bag:** Included

**Chain Type:** Black, grade 80

**Motor Voltage:** 115 V 1 Phase 60Hz

**Controller Voltage:** 115 V 60Hz

\* WLL = Maximum working load limit

## PACKAGE CONTENTS:

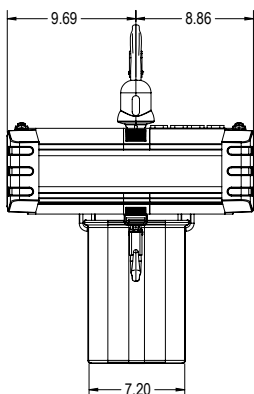
**1pc** Electric Motor 115V

**1pc** 10' Chain

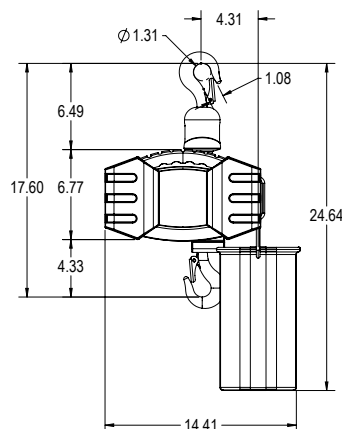
**1pc** Chain Bag



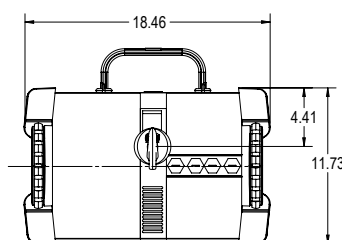
Front View



Side View



Top View



**Adaptive Technologies Group**  
1635 E. Burnett Street | Signal Hill, CA 90755 USA  
Ph: 562.424.1100 | Fax: 562.424.3520  
www.adaptivetechnologiesgroup.com



## ALWAYS INSTALL SAFETY CABLES

**WARNING:** Mounting and/or suspension of equipment requires experienced professionals. Improperly installed equipment can result in property damage, personal injury and/or liability to the installing contractor.

# ATG-SR05

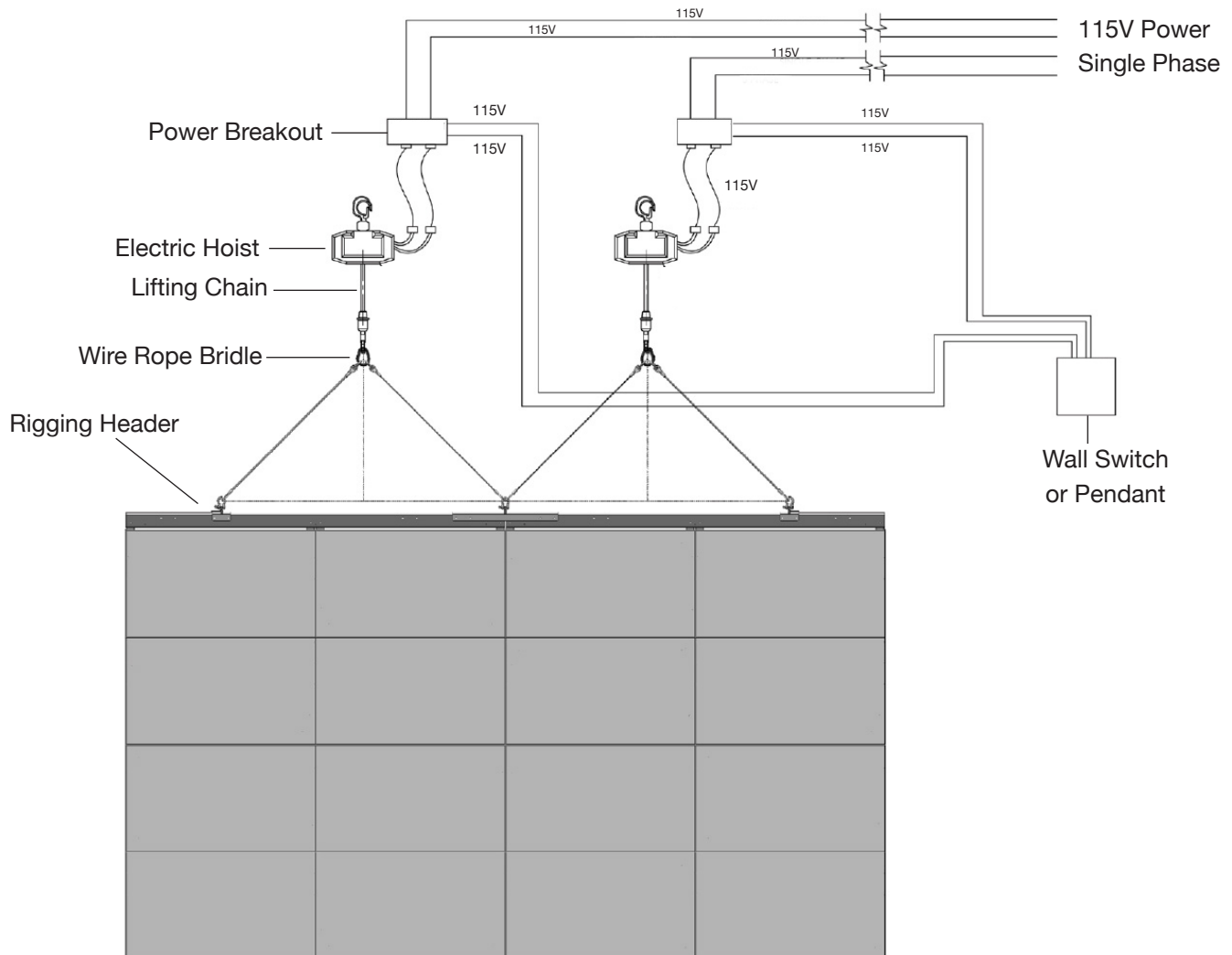
1/2 TON LIFT SYSTEM

## 115V CHAIN HOIST AND ELECTRICAL COMPONENTS

**Pro-Lift™**

### Electrical Hoist System

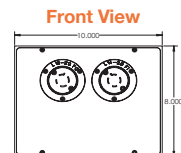
### Electrical Diagram



#### ATG-FLYBX-L5-20 FLY BOX Dual Twist Fly Box



**SPECIFICATIONS:**  
**Weight:** 6lb./2.7Kg  
**Voltage:** 115V 1-phase  
**Amps:** 20  
**Power connector:** L5-20  
**Control connector:** L14-20

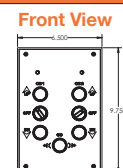


**Dimensions:**  
 10" Wide  
 8" Tall  
 4" Deep

#### ATG-WC-2CH - 2 Channel Wall Switch



**SPECIFICATIONS:**  
**Weight:** 7 lb./3.2 Kg  
**Voltage:** 115V, 1-phase  
**Amps:** 20  
**2 Channel**



**Dimensions:**  
 6.5" Wide  
 4.75" Deep  
 9.75" Tall

#### ALWAYS INSTALL SAFETY CABLES

**WARNING:** Mounting and/or suspension of equipment requires experienced professionals. Improperly installed equipment can result in property damage, personal injury and/or liability to the installing contractor.