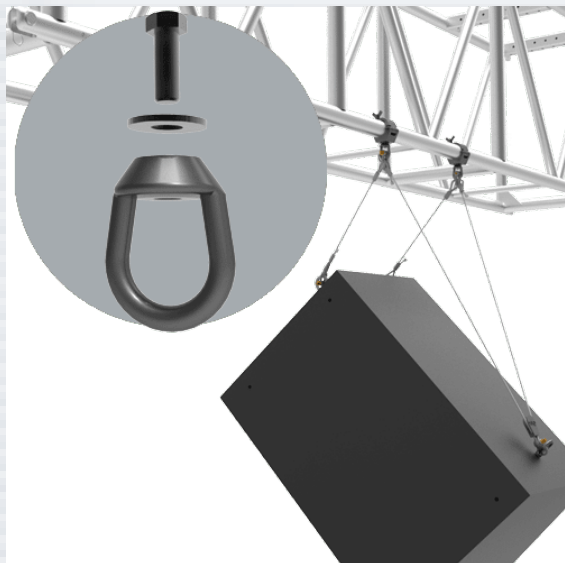


MC-EN-KT

1650 lb WLL

TRUSS CLAMP TO EYENUT KIT

TrussWare™



Eye Nut Assembled to Truss Clamp

The MC-EN-KT load rated hang point is an attachment of the MC-030 Truss Clamp, that allows suspension of loads up to 1650 lb* from under 2" pipe or truss. This assembly includes a load rated 1/2" eye nut that bolts to the truss clamp using included hardware.

*The working loads of both of the MC-EN-KT and the MC-030 may exceed the load strength of the overhead structure they are suspended from.



Eye Nut Kit

STANDARD FEATURES:

- ▶ Domestically produced
- ▶ Drop Forged
- ▶ Available in Silver and Black

OPTIONAL ACCESSORIES:

- ▶ See Shackle data sheet
- ▶ See Safety Cables and Wire Rope data sheets

SPECIFICATIONS:

Material: Steel
Finish: Galvanized
Color: Black
WLL: 1650 lb / 750 Kg
Safety Factor: 5:1
Weight: .5 lb

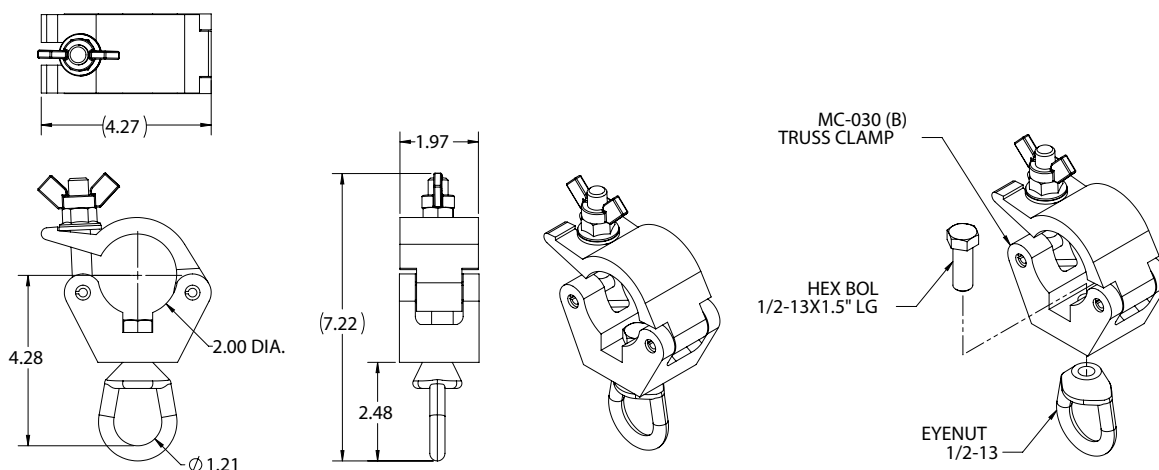
PACKAGE CONTENTS:

1 pc 1/2-13 X 1-1/2 Bolt
1 pc 1/2" Eye Nut



Rated for indoor use.

DIMENSIONS



ALWAYS INSTALL SAFETY CABLES

WARNING: Mounting and/or suspension of equipment requires experienced professionals. Improperly installed equipment can result in property damage, personal injury and/or liability to the installing contractor.