

Swivel Arm Beam Clamp

With Rotating Suspension Arm

BEAM CLAMPS



Swivel Structural Beam Clamps are time-saving rigging solutions that provide a safe and load-rated method of securing loads from overhead Beams. Once anchored to a beam, they provide a simple and reliable method for aiming loudspeakers and other objects.

Swivel Beam Clamps secure to a building's overhead structural beams, steel or wood, for widths ranging from 3.0" to 12.0" (76 to 305 mm) wide.

It's lower suspension arm comes in a variety of lengths to suit the needs of the installation and rotates 360 degrees for precise aiming.



U-Bracket Option



Wood Beam Option
Vertical Orientation



Dual Tilt Kit Option
Horizontal Orientation

OPTIONAL ACCESSORIES:

- ▶ AJ-1524 - Adjustable U-Bracket
- ▶ AJ-2336 - Adjustable U-Bracket
- ▶ TCK Series - Adjustable Tilt Cable Kit
- ▶ TCK2 Series - Adjustable Tilt Cable Kit
- ▶ FC Series - Fixed Length Wire Rope Assemblies
- ▶ BC-LAM-KIT - Laminated Beam Adapter Kit

SPECIFICATIONS:

Materials: Structural Steel Alloy
Finish: Powder Coat
Color: Black
Pan Rotation: 360°
WLL: 430 lb / 195.5 Kg
Design Factor: 7:1 Ratio
Pack Count: 1/carton

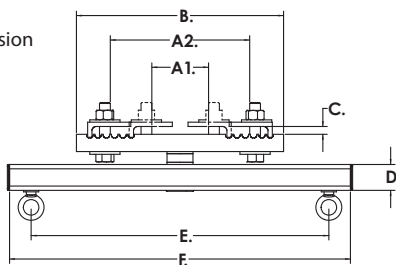
PACKAGE CONTENTS:

1pc: Beam Clamp
1pc: Swing Arm
2pc: Eyebolts
1bag: Hardware Kit

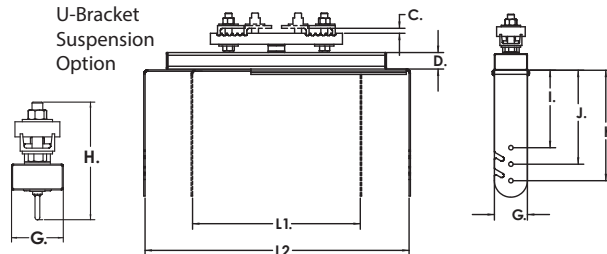


Rated for indoor use.

Eyebolt
Suspension
Option



U-Bracket
Suspension
Option



SWIVEL BEAM ARRAY DIMENSIONS

Swivel Beam Clamps	A1	A2	B	C	D	E	F	G	H(REF)	I	J	K	L1	L2
SBC3-8-CA-20	3	8	12	.50 MAX	1.5	17.25	19.75	3	6.8	7	8.5	10	15	24
SBC3-8-CA-30	3	8	12	.50 MAX	1.5	27.5	30	3	6.8	7.9	9.4	10.9	23	36
SBC7-12-CA-20	8	12	16	.50 MAX	1.5	17.25	19.25	3	6.8	7	8.5	10	15	24
SBC7-12-CA-30	8	12	16	.50 MAX	1.5	27.5	30	3	6.8	7.9	9.4	10.9	23	36
SBC12-17-CA-20	12	17	16	.50 MAX	1.5	17.25	20	3	6.8	7	8.5	10	15	24
SBC12-17-CA-30	12	17	16	.50 MAX	1.5	27.5	30	3	6.8	7.9	9.4	10.9	23	36

Adaptive Technologies Group
 1635 E. Burnett St. | Signal Hill, CA 90755 USA
 Ph: 562.424.1100 | Fax: 562.424.3520
 www.adaptivetechnologiesgroup.com



ALWAYS INSTALL SAFETY CABLES

WARNING: Mounting and/or suspension of audio and video equipment requires experienced professionals. Improperly installed loudspeakers can result in property damage, personal injury and/or liability to the installing contractor.