

The CG-SH-1-245-IH Vibration Isolation Hangers are designed to reduce the transmission of vibration and noise produced by suspended sources such as mechanical equipment, in-line fans, cabinet fans, piping, ductworks and audio equipment. The CG-SH-1-245-IH hanger allows a support rod misalignment through a 30° arc without short-circuiting and carry a 245 lb load with a deflection of up to 1.19”.

Contents:

Be sure that all of the following items are included in this kit before proceeding:

- 1 pc Isolation Hanger
- 1 pc All Threaded Rod
- 1 bag Hardware Kit

Installation Procedure:

Step 1.

Option 1:

Attach the CG-SH-1-245-IH isolation hanger to the upper All- thread rod using flat washer and hex nuts. Upper All-thread rod must already be installed to upper structure using beam clamps or other load rated mounting brackets (Figure 1).

Option 2:

Attach the CG-SH-1-245-IH isolation hanger directly to a beam clamp using bolts, flat washers and hex nuts (Figure 2).

Figure 2

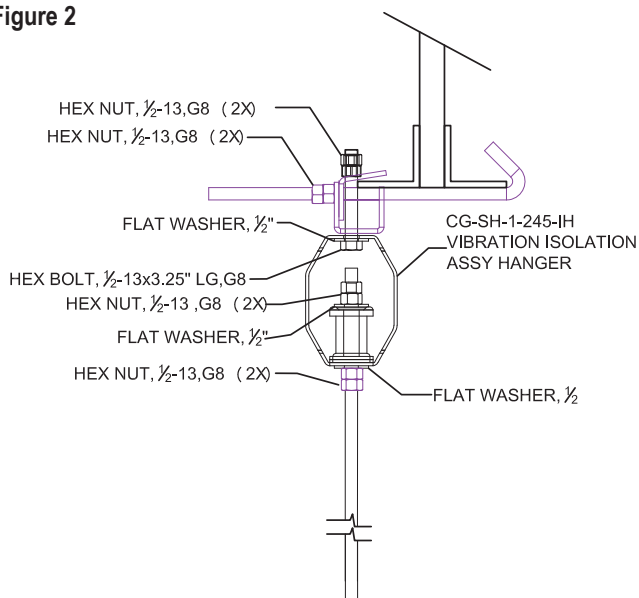
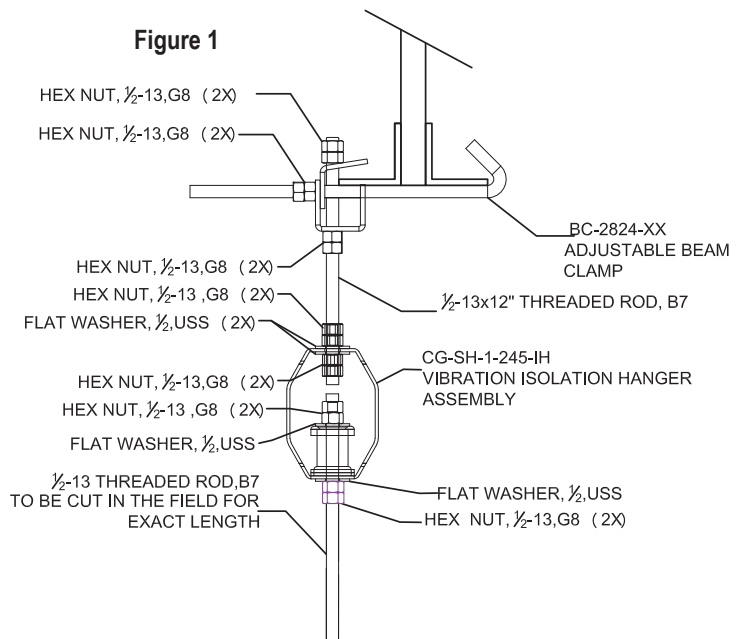


Figure 1



Step 2. Attach a 1/2” all-thread rod to the lower hole and into the spring of the isolation hanger . Secure all-thread using a flat washer and hex nuts. Make sure to double the hex nut above the spring for security.

Step3 . Check all connections on the isolation hanger before attaching load to the lower all-tread.