

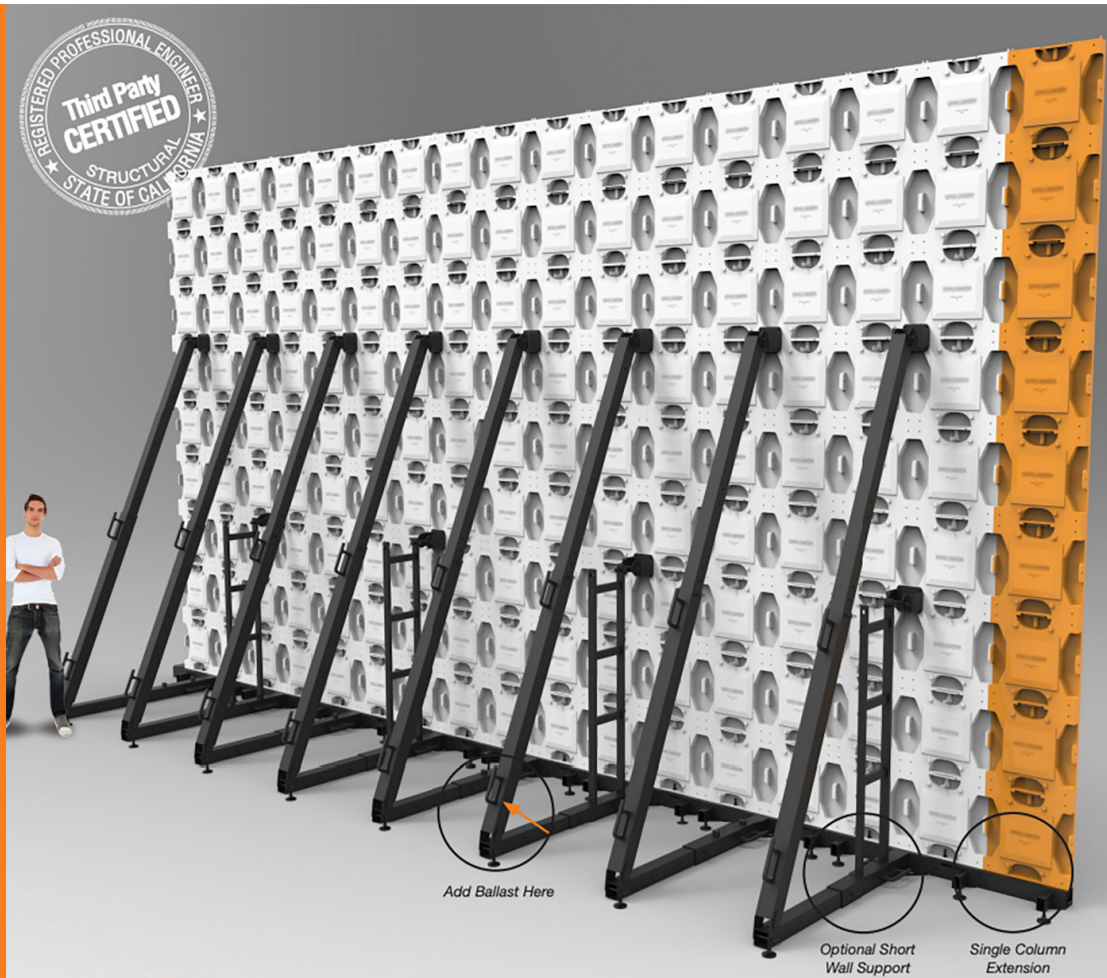
# LED Ground Support System

DUAL COLUMN INTERLOCKING GROUND SUPPORT SYSTEM

Loc-N-Load®

## FEATURES:

- Up to 16 x 9 video wall configurations
- Includes Single-column extension
- Fast set ups and dismantling
- Light-weight aluminum construction
- Telescoping two-column T-Base floor module
- Telescoping Back Brace
- Adjustable floor levelers
- Built in X and Z axis bubble levels
- Rugged black powder coat finish
- Aircraft pins for quick assembly
- Ballast anchor points and tie downs
- Rolling cart with 6" locking casters
- Fits inside delivery truck width-wise
- Cart top converts to table
- Easy to use ballast calculator
- Fork Lift Compatible
- Supports 500mm & 500 X 1000mm tiles including Absen A3 Pro, A5, A6T, A7, X3, X5 & X7, M2.9, Unilumen 3.9, Unilumin U PAD, CreateLED, SquareV and PixLED video



## Assemble 16X9 Video Walls Fast



This innovative ground support system includes everything you need to set up video walls. Quickly build up to 16 LED tiles wide and 9 LED tiles tall using 500 mm LED monitors. Or add the single column extension to assemble a 17 X 9. Loc-N-Load® sets up and packs up in half the time that it takes using conventional ground support methods.

The Loc-N-Load's telescoping T-Base supports two vertical columns of LED tiles (up to 9 high). They connect to the next T-Base and to the next, etc. Each T-Base is equipped with three adjustable gliders as well as X and Z axis bubble levels so your crew can get the first tier of monitors locked into the same plane quickly.

The telescoping Back Brace connects to the back of the T-Base and extends upward to the 4th, 5th and 6th tiers as the T-Base extends outward. This provides a higher reach and an anchor point to the upper tier monitors as the video wall grows higher.

When dismantled, all of the T-Bases, Back Braces and Back Stays quickly stow onto the rolling cart, along with the single-column T-Base extension. Cart weight fully loaded is less than 850lbs.



### ALWAYS INSTALL SAFETY CABLES

**WARNING:** Do not assemble Loc-N-Load® video walls without first adding counterbalancing ballast. Weights and/or straps must be applied to the Loc-N-Load® ground support system to secure the video wall. See ballast table in instruction manual or on side of T-Base for safe installation and use.



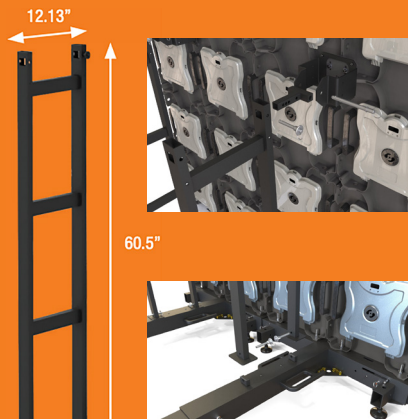
# LED Ground Support System

LOC-N-LOAD® COMPONENTS

Loc-N-Load®

## Optional Accessories

- Short Wall Support - GS-LADDER-5
- Short Wall Support Cart Mounts - GS-LADDER-HOOK



- Single Column Extension- GS-T-BASE-EXT
- Column Extension Cart Mount - GS-T-BASE-EXT
- Stabilization Ski - GS-SKI
- Stabilization Ski Cart Mount - GS-SKI-MH

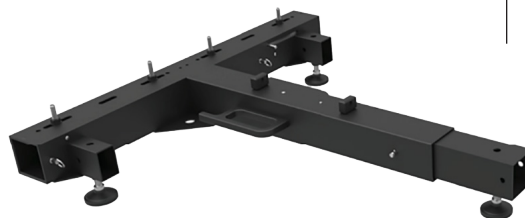
- Blank Tile Spacer 500X500- GS-BT-500X500
- Blank Tile Spacer 500X1000- GS-BT-500X1000



- Back Stay Tile Adapters - 8pc Kit
  - GS-BS-X5-AP - Absen X3, X5, X7
  - GS-BS-M8-AP - Absen A3 Pro, A5, A6T, A7
  - GS-BS-M2.9-S-AP - Absen M2.9
  - GS-BS-M10-AP - Unilumin 3.9
  - GS-BS-UL-AP - Unilumin U PAD
  - GS-BS-PF-AP - PixelFlex - Tour
  - GS-XL243-BSA - PixLED XLH-HL243
  - GS-BS-SV-AP - SquareV

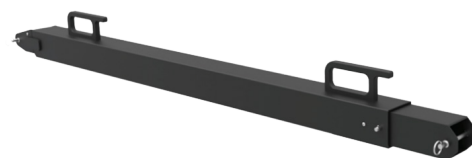


## Dual Column Telescoping T-Base - Required



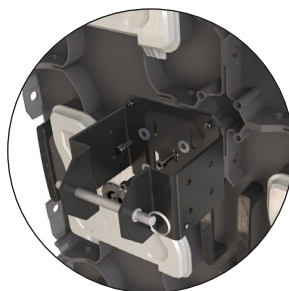
Connect bases to other bases side by side as needed, in-line or in a curve. Each base accommodates two 500mm x 500mm LED monitors. Build two vertical columns up to 4500mm tall. The back telescopes out as the video wall gets taller. A bubble level and adjustable feet provide fine-tune leveling.

## Telescoping Back Brace - Required



Support video walls six or more monitors high (3000 mm +). Its lower clevis-style end connects to the T-Base. Its top connects to the universal back stay using an adapter plate that secures to the LED tile. Ballast handles are used to hang sand-bags and strap down to decks.

## Universal Back Stay



This bracket connects the telescoping back brace or ladder support directly to the LED tile via an LED adapter plate.

## Single Column Extender



Attach the Extender to the right side of a dual column T-Base to add one more column of LED tiles.

## Front Ski Set



Adds stability to the front of short video walls by placing one foot on the left and one on the right.



# LED Ground Support System

DUAL 2 COLUMN TELESCOPING T-BASE AND BACK BRACE POSITIONS

Loc-N-Load®

## A, B and C Positions

The Loc-n-Load® interlocking ground support system has three positions that the telescoping T-Base and back brace lock into as rows of monitors are added.

After laying down the T-Bases and locking them together, you can set 4-5 rows of monitors utilizing the A position. Add a 6th row of monitors and extend the t-base and back brace into the B position. Add a 7th row of monitors and extend the t-base and back brace out to the C position. Once in the C position you can add an additional 2 rows of monitors for the maximum height.

Always load counter balancing ballast when assembling the Loc-n-Load® video walls. Look for the "Load Ballast Here" labels.



### WARNING:

**BALLAST WEIGHT MUST BE ADDED DURING ASSEMBLY. PLEASE REFER TO WEIGHT TABLE BELOW.**

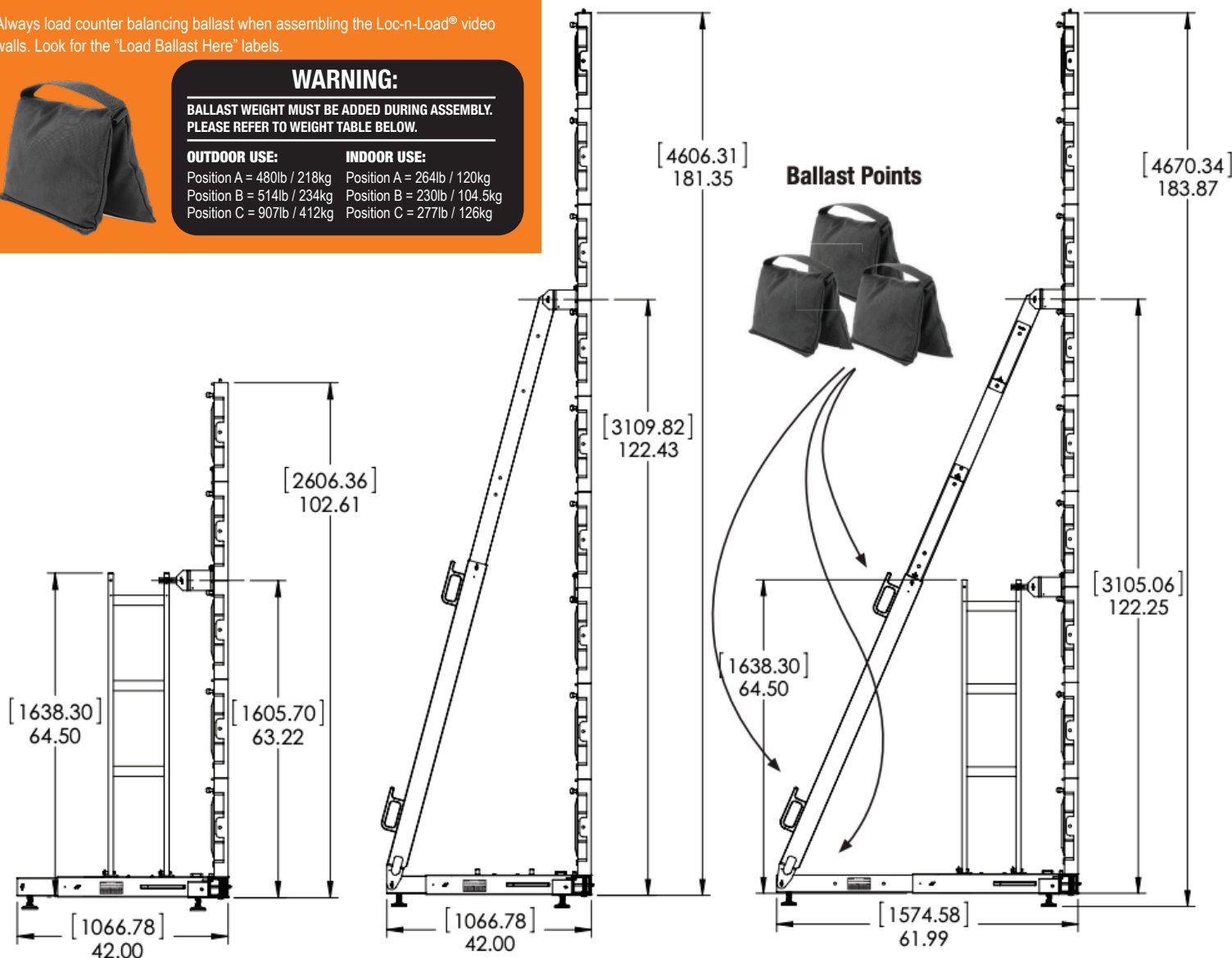
#### OUTDOOR USE:

Position A = 480lb / 218kg  
Position B = 514lb / 234kg  
Position C = 907lb / 412kg

#### INDOOR USE:

Position A = 264lb / 120kg  
Position B = 230lb / 104.5kg  
Position C = 277lb / 126kg

## Extreme Positions Shown Below



3-5 Tiles High

A - Position with Short Wall Support

9 Tiles High

A - Position with Back Brace

8-9 Tiles High

C - Position with Back Brace



#### ALWAYS INSTALL SAFETY CABLES

**WARNING:** Do not assemble Loc-N-Load® video walls without first adding counterbalancing ballast. Weights and or straps must be applied to the Loc-N-Load® ground support system to secure the video wall. See ballast table in instruction manual or on side of T-Base for safe installation and use.



Rated for indoor use.



# LED Ground Support System

GROUND SUPPORT ROLLING CART

Loc-N-Load®

## ROLLING CART UNLOADED

- Material: Aluminum
- Finish: Powder Coat
- Color: Black
- 6" diameter locking wheel base
- Carries all the components necessary to assemble a 17X9 Video Wall
  - 8 pcs Dual Column T-Bases
  - 8 pcs Telescopes Back Brace
  - 8 pcs Back Stay Adapters
  - 2 pcs Ladder Brace
  - 1 pc Single Column Extension

## OPTIONAL ACCESSORIES

- Cart Cover - GS-CART-TOP

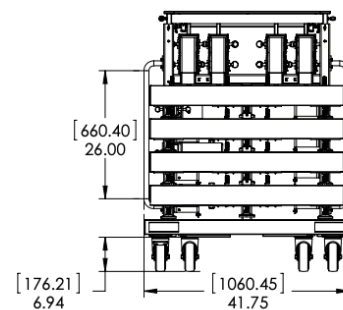
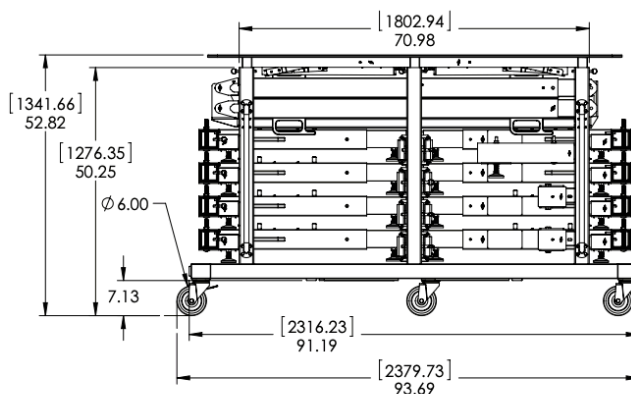


- Cart Cover / Work Bench- GS-CART-TOP-X4L



## Stowable Transport Cart

GS-CART-BSC



## Loc-N-Load® Rolling Cart

The Loc-N-Load® Rolling Cart holds all of the components that are necessary to assemble LED video walls ground support system, up to 17 monitors wide and 9 monitors tall. The cart's rugged tubular aluminum frame stows eight two-column ground support assemblies, one single-column base extension.

The cart's finish is powder-coated in black and rolls on 6" locking casters. Corner bumpers protect its frames while being transported and all the ground support components lock into the cart with quick release fasteners.

The removable top converts into a set up table and provides a way to stack additional gear. Its length stows inside a delivery truck length-wise up against the cab.

