

# Installation Guide

## PIPE-500-SERIES

### Telescoping Overhead Pipe Adapter



The PIPE-500-SERIES, is a telescopic pipe adapter for overhead mounting. It features 500NPS threading on both sides, which accommodates several different overhead and speaker mounting solutions.

#### Contents:

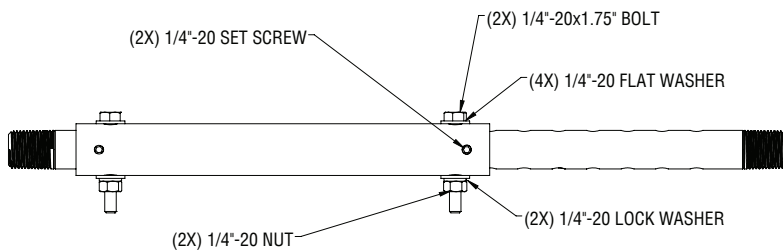
Be sure that all of the following items are included in this kit before proceeding:

2 pc	2 pc 1/4"-20x1.75" Bolt
4 pcs	4 pc 1/4"-20 Flat Washers
2 pcs	2 pc 1/4"-20 Lock washers
2 pc	2 pc 1/4"-20 Nut
2 pcs	2 pc 1/4"-20 Set Screw

#### Installation Procedure:

##### Step 1:

Choose the correct Overhead/Speaker Mounting Solution (500NPS thread).



##### Step 2:

Secure Overhead Mounting Solution to the ceiling according to its specifications.

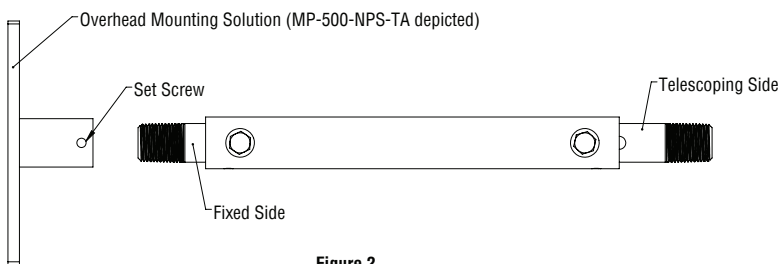
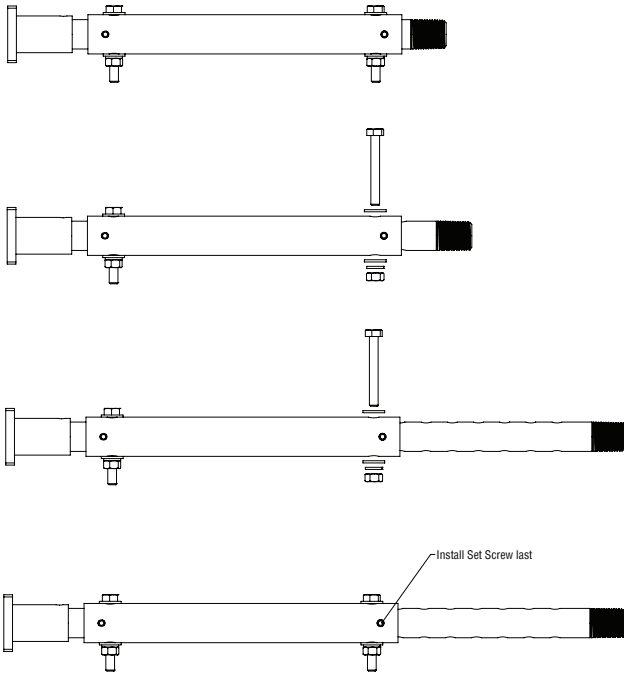


Figure 2

# Installation Guide

## PIPE-500-SERIES

### Telescoping Overhead Pipe Adapter



#### Step 3:

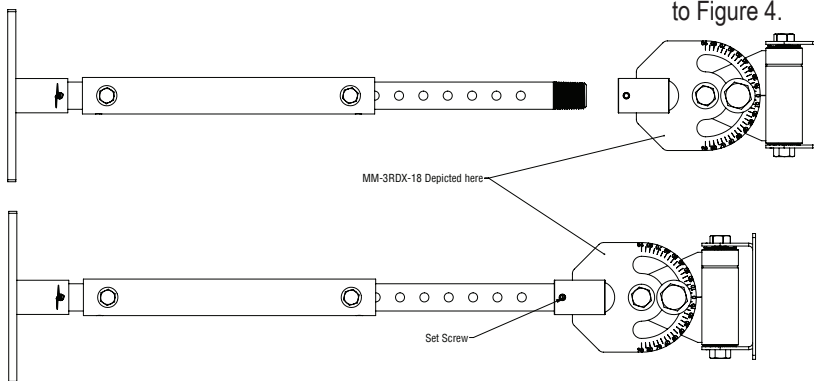
Screw the PIPE-500-1015 into the Overhead Mounting Solution. The non-telescoping side should be used; Secure with a set screw (Provided with the Overhead Mounting Solution). Refer to Figure 2.

#### Step 4:

Set PIPE-500-1015 to desired length. This is done by removing the 1/4"-20 bolt, washers, nut, and 1/4"-20 set screw from the telescoping pipe side. Set pipe to the desired length then reinstall the hardware. Refer to Figure 3.

#### Step 5: Install Safety Cables

After desired length is set, screw on the chosen Speaker Mounting Solution. Secure with a set screw (Provided with the Speaker Mounting Solution). Refer to Figure 4.



#### Note to installers:

Due to the wide variety of wall structures, materials and mounting methods, the installing contractor must exercise proper judgment in selecting the mounting area and hardware.

As a guide, the installation, when complete should be capable of supporting 5 to 10 times the actual applied load. Always use a backup safety system such as a safety cable.

To assure a trouble-free installation, read through and follow these instructions carefully before beginning. If you have doubts about the integrity of the structure you are mounting to or you are not sure about the proper hardware to use, consult a structural and/or hardware specialist.