

PL-144-WL

LAMP & LASER PROJECTOR LIFT & ENCLOSURE

Pro-Lift™

FEATURES:

- For lamp & laser style projectors
- Sound Isolated Enclosure
- Self Diagnosing
- Power Failure Reset
- Isolated Power & Signal Feeds
- Programmable Height Positions
- Precise Stop & Start Positions
- Vertical Return +/- 1/8 @ 60'
- 2 pc Rigid Vertical Rail Frame
- Phone Home Capable
- Ceiling Docking Station
- External Ventilation for Lamp Style Projectors
- Low Voltage Control Box
- Overhead Mounted Controller



Cinema Projector Lift

Adaptive Technologies Group's family of cinema projector-lifts compliments the needs of emerging boothless cinema auditoriums. These designs offer quieter running and a smoother, safer and more efficient operation. The low profile two-piece vertical framework is a bolt-in, sound-isolated, structure which secures to the auditorium's rear wall, installing quickly, safely and easily. (See Page 3 & 4)

Its spacious projector enclosure is acoustically-treated to reduce noise and it assembles on-site, thus assuring its transportability through narrow hallways and corridors. PL-144-WL is perfect for warmer running lamp style projector lifts. Ventilation is achieved by way of a docking-style interface between the enclosure and the ceiling. Available options include an internal projector rack, a 110V power strip and an oversized optical glass port. Its low-voltage lockable controller, protective side-guards and phone home capability make it perhaps the industry's most functional projector-lift system available

ALWAYS INSTALL SAFETY CABLES

WARNING: Mounting and/or suspension of equipment requires experienced professionals. Improperly installed equipment can result in property damage, personal injury and/or liability to the installing contractor.

Adaptive Technologies Group

1635 E. Burnett Street | Signal Hill, CA 90755 USA
Ph: 562.424.1100 | Fax: 562.424.3520
www.adaptivetechgroup.com



PL-144-WL

LAMP & LASER PROJECTOR LIFT & ENCLOSURE

Pro-Lift™

SPECIFICATIONS:

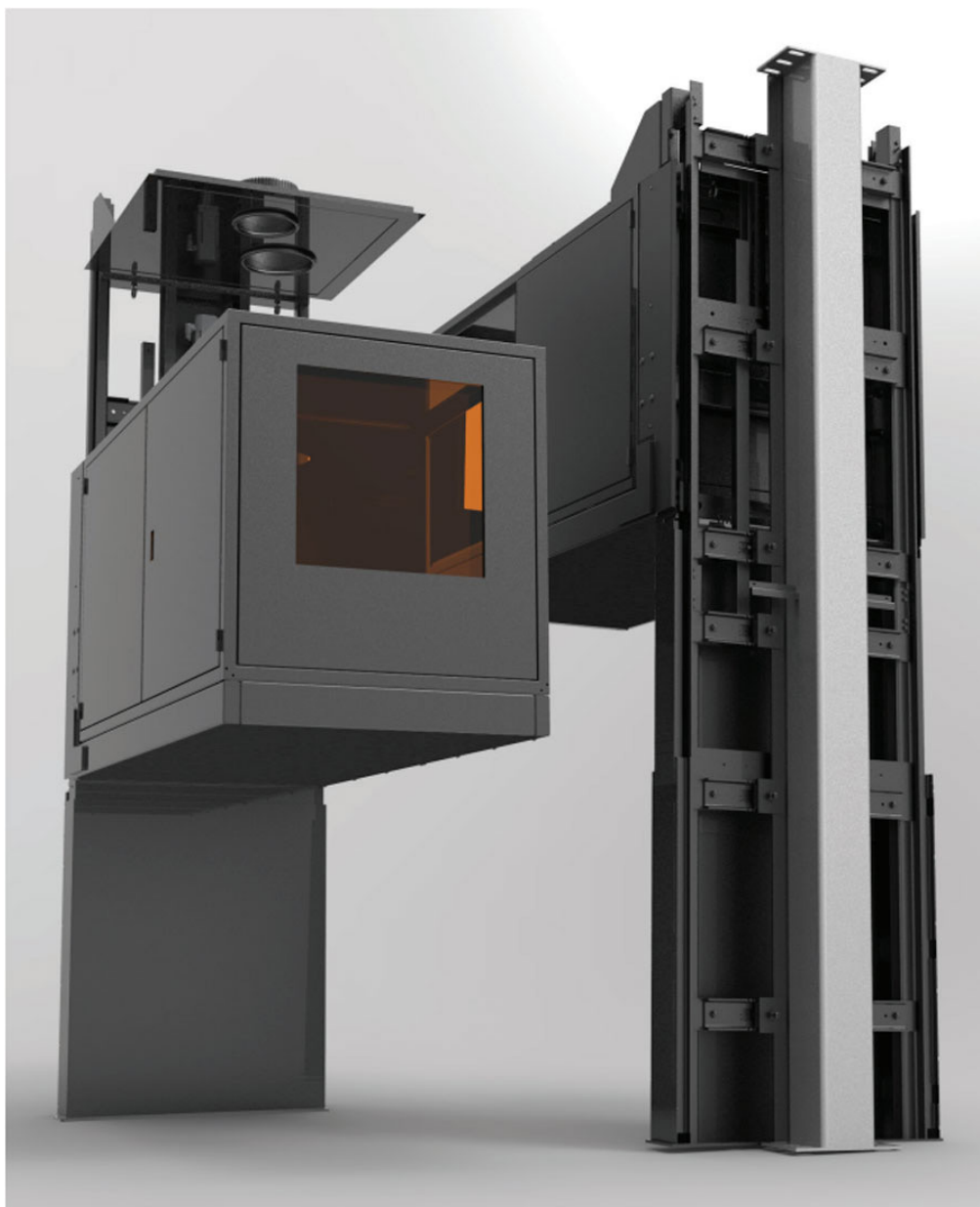
LIFT ASSEMBLY	ENCLOSURE
Depth: 88.94"	External Dimensions
Width: 41"	Depth: 78"
Height: 130.71"	Width: 41"
Electric Motor: Servo Drive	Height: 43.5"
Return Accuracy:	Internal Dimensions
• Vertical:	Depth: 76"
+/- 1/8" @ 60'	Width: 34.5"
• Horizontal:	Height: 42.75"
+/- 0.5 degree @ 60'	
Travel Speed:	Exhaust:
• 20 feet per minute preset	• 10" ducting port to docking plate
	Intake:
	• 12" ducting port to docking plate
Base Plate:	Sound ISO:
• 42W" X 6.75"D X 1/2"H	Internal 1/2" thick all around
Beam Clamps:(6plcs) (10-13)" Flanges	Finish: Powder Coat Black
Finish: Powder Coat Black	Optical Port Glass: 24"X24"

Total Weight: 1676 lbs excluding projector + 3D projection equipment

Maximum Load: 500 lbs
Design Factor: 5:1

Power Requirements:
208V 3-Phase 10amp
110V 60Hz

NOT FOR LIFTING PERSONEL



Technical:

Adaptive Technologies Group has blended its structural design talents with its precision fabrication talents into a revolutionary new cinema projector lift for boothless auditoriums using the latest in industrial control technologies. Its first design, the Pro-Lift PL-144-WL supports smooth vertical travel up to 12 feet high on structural rails which anchor into the auditorium's back wall, hidden behind a 2-piece safety cover with safety finger guards.

This premier design starts with a spacious quiet-ized and well ventilated enclosure that houses high powered lamp & laser cinema projectors, power supplies and 3D attachments. Side doors on compression locks provide significant access to make servicing projectors efficient. An upper panel connects internal ventilation to a ceiling mounted docking station. Optional tilt adjustable projector racks are available.

The computerized controller makes this projector lift a "smart" system. Once programmed, it requires no further settings. Speed control, precise start/stop settings, return memory, torque limits and power failure reset are all important features of the programmable Logic Controller (PLC).

The "smart" controller program commands a 208V 3-phase servo-motor and high-strength alloy screw drive that are mounted within the vertical rail assembly and connects to the enclosure's under-carriage. This entire lift assembly ships knocked down for easy transporting.

Adaptive Technologies Group
1635 E. Burnett Street | Signal Hill, CA 90755 USA
Ph: 562.424.1100 | Fax: 562.424.3520
www.adaptivetechologiesgroup.com



ALWAYS INSTALL SAFETY CABLES

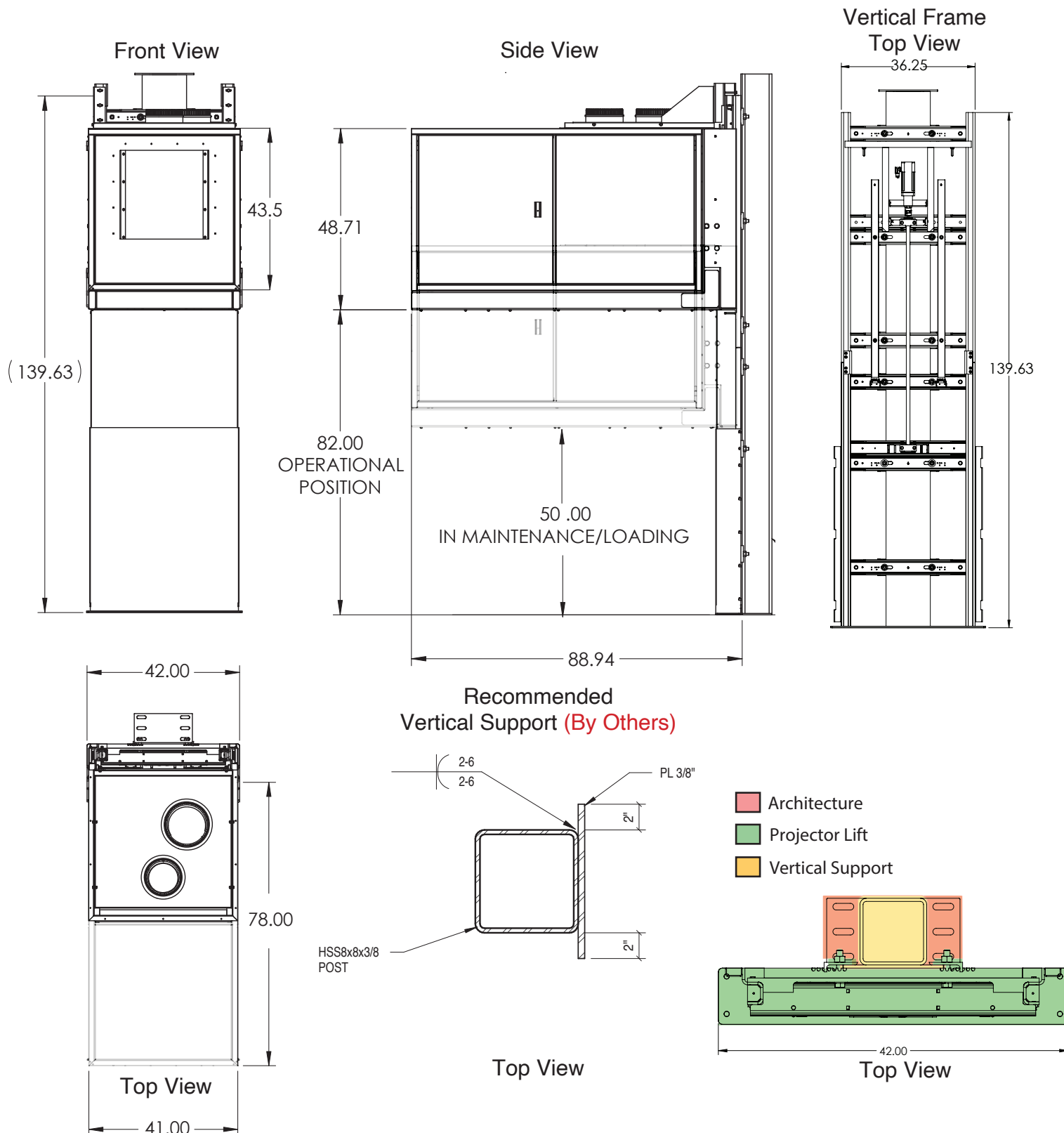
WARNING: Mounting and/or suspension of equipment requires experienced professionals. Improperly installed equipment can result in property damage, personal injury and/or liability to the installing contractor.

PL-144-WL

LAMP & LASER PROJECTOR LIFT & ENCLOSURE

Pro-Lift™

LIFT ASSEMBLY



ALWAYS INSTALL SAFETY CABLES

WARNING: Mounting and/or suspension of equipment requires experienced professionals. Improperly installed equipment can result in property damage, personal injury and/or liability to the installing contractor.

ARCHITECTURAL SPECIFICATIONS

TOP VIEW BACK WALL



- Mounting Flange

Front View

Vertical
Support
Structure
(by others)

120"

BACK WALL

8"x8"x3/8" TUBE
(by others)

- Architecture
- Projector Lift
- Vertical Support

3 LAYERS OF GYPSUM (TYP)

PROJECTOR LIFT
FRAME (TYP)

WELDED FLANGE
(by others)

Center Tube with Center of Screen

TUBE FLANGE EXPOSED PER FRAME SPECIFICATIONS

FLANGE HEIGHT PER
SELECTED PROJECTOR
LIFT SPECIFICATION

SECURE TUBE
TO FLOOR AND
ROOF STRUCTURE

FLANGE DEPTH 2"
BELOW CONCRETE

Mounting Plate

Concrete Foundation

Adaptive Technologies Group
1635 E. Burnett Street | Signal Hill, CA 90755 USA
Ph: 562.424.1100 | Fax: 562.424.3520
www.adaptivetechologiesgroup.com



ALWAYS INSTALL SAFETY CABLES

WARNING: Mounting and/or suspension of equipment requires experienced professionals. Improperly installed equipment can result in property damage, personal injury and/or liability to the installing contractor.