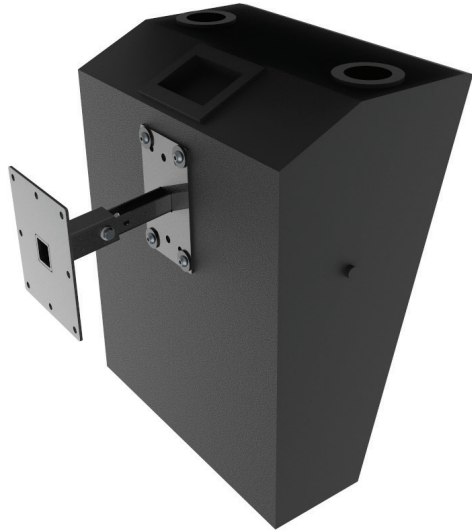


# WM-0-15-60

# 60 lb WLL

## REAR EXTENDABLE SPEAKER MOUNT

## WALMOUNT



The WM-015-60 wall mount is an excellent choice for various wall mounting positions as well as 0° and 15° speaker tilt angles. The speakers are secured to standard VESA mounting hole patterns, 5" x 2.75" and 4" x 2.25", located on the rear of the speaker cabinets.

The speaker tilt angle can be selected from either 0° or 15°. For 0° the wall mount tube is facing up, for 15° the wall mount tube is facing down.

This wall mount is equipped with a 3-position telescoping arm (5.06", 6.05" and 7.05"). This same arm can be used to conduct the signal wire for a clean look.



### STANDARD FEATURES:

- ▶ Infinite locking adjustments
- ▶ Single man speaker installations
- ▶ Optional safety cables available
- ▶ 0 or 15 Degree Down-Tilt
- ▶ Conforms to multiple mounting hole patterns including 2 x 4-1/4 and 2-3/4 x 5

### OPTIONAL ACCESSORIES:

- ▶ Safety cables (standard and custom lengths)

### SPECIFICATIONS:

**Material:** Structural Steel Alloy

**Finish:** Powder Coat

**Color:** Black

**Tilt Rotation:** 15 degrees

**WLL:** 60 lbs. (27.2 Kg) max.

**Design Factor:** 7:1 ratio

**Net wgt:** 2.2 lbs. (1 Kg) each

**Shipping wgt:** 2.5 lbs. (1.13 Kg) each

**Pack Count:** 1 per carton

### PACKAGE CONTENTS:

- 1 pc:** Wall mounting plate
- 1 pc:** Speaker adapter assembly
- 1 pc:** Hardware kit assembly
- 1 pc:** Instruction sheet

# WM-0-15-60

## PAN & TILT BACK & REAR SPEAKER MOUNT

## WALLMOUNT

