

# Installation Guide

## BC-LAM-KIT

### Wood Beam Clamp



The BC-LAM-KIT is an adapter bracket for the standard BC Series channel style beam clamps. With this adapter kit, the standard I-beam clamps can be attached to a wood/laminated beams. When used with the BC3-8 it is adjustable from 1" wide to 6.75" wide wood beams, and with the BC8-12, it is adjustable from 5.25" to 11.25" wide wood beams.

### Contents:

Be sure that all of the following items are included in this kit before proceeding:

- 2 pcs. Laminated beam Adapter bracket
- 2 pcs Hex bolt, 5/8x1.75" long
- 2 pcs Flat washer, 5/8 SAE, small
- 2 pcs Flat washer, 5/8, USS, wide
- 2 pcs Nyloc nut, 5/8-11
- 1 pc. Instruction sheet

### Installation Procedure:

#### Step 1:

##### Attach Adapter Bracket:

Remove the locking clamp assembly from the channel of the beam clamp

#### Step 2:

Attach the adapter bracket to the channel of the beam clamp. Make sure the short leg faces away from the center of the channel. Use the provided 5/8" hex bolts, washers and nuts to secure both brackets to the channel (Figure 1). Do not tighten.

Figure 1

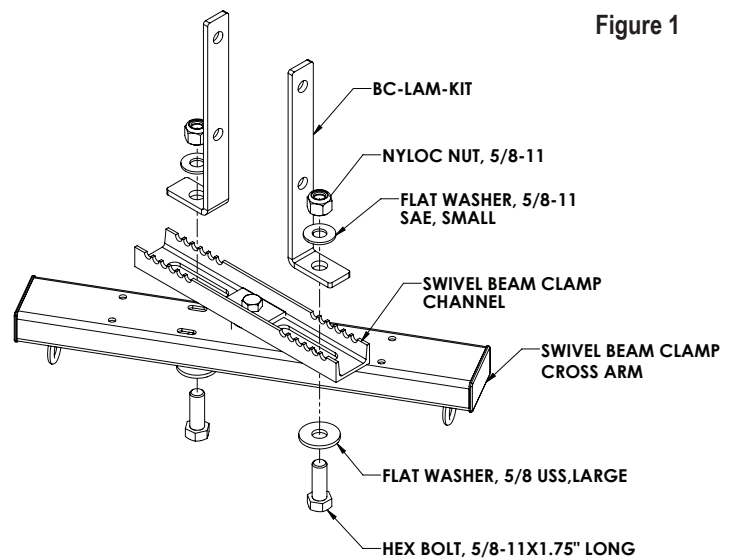


Figure 2

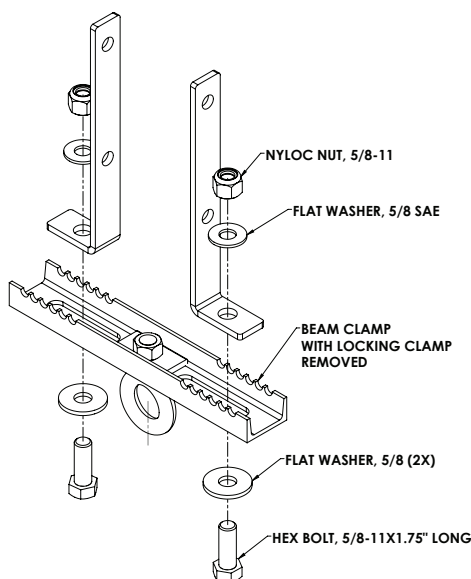
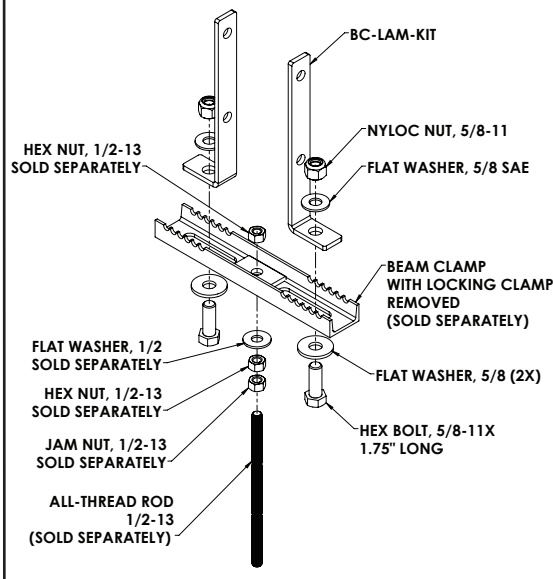


Figure 3



#### Step 3:

Select and position the adapter bracket/beam clamp assembly to the desired location. If using a hex bolt or threaded rod through the beam, mark the location for the hole and drill all the way thru and secure adapter bracket using 1/2" dia. hex bolts, flat washers and nyloc nuts (Not included)(Figure 2). If using lag bolts, pre-drill the beam then secure the bracket using a 3/8" or 1/2" dia. lag bolts and flat washers (Figure 3)

# Installation Guide

## BC-LAM-KIT

### Wood Beam Clamp

#### Step 4:

Center the channel of the beam clamp on the bottom of the wood beam then tighten bolts and nuts permanently secure the adapter bracket to the channel (Figure 1).

#### Step 5:

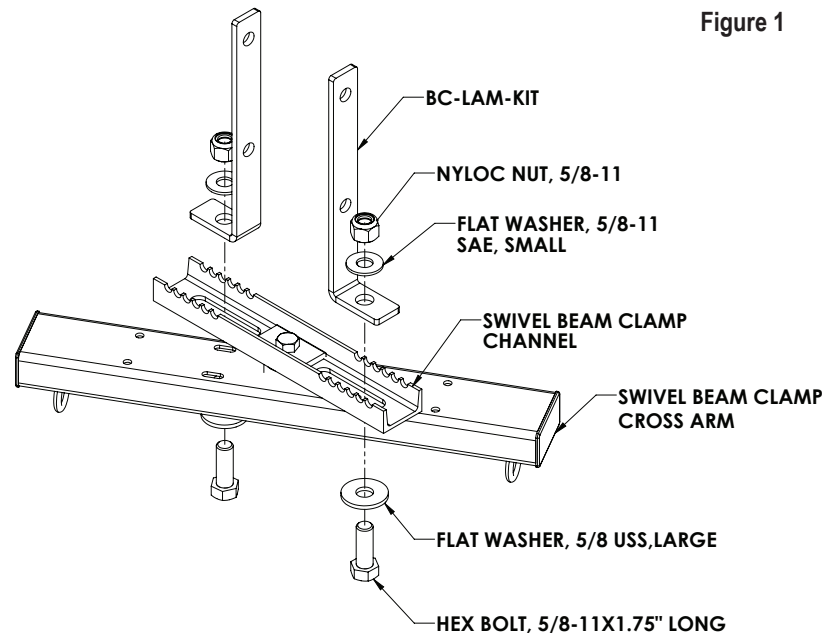
Check system

Check all connections to make sure all bolts and nuts are tightened.

#### Step 6:

Suspend equipment to the provided suspension points on the beam clamp or the swivel beam clamp series (See main figure)).

Figure 1



**Caution:** Due to the wide variety of structures, environments, materials and rigging methods, the installing contractor must exercise good judgment in selecting the proper mounting area and hardware.

Follow these instructions for the most efficient and safest mounting results. Laminated beams must be able to support 5 times the weight of the suspended equipment.

Do not exceed the Wood beam Adapter's working load limit of 300 lbs / 136 kg.

#### **Note to installers:**

Due to the wide variety of wall structures, materials and mounting methods, the installing contractor must exercise proper judgment in selecting the mounting area and hardware.

As a guide, the installation, when complete should be capable of supporting 5 to 10 times the actual applied load. Always use a backup safety system such as a safety cable.

To assure a trouble-free installation, read through and follow these instructions carefully before beginning. If you have doubts about the integrity of the structure you are mounting to or you are not sure about the proper hardware to use, consult a structural and/or hardware specialist.