

# BC3-8-0 Beam Clamp

OPEN HANG POINT FOR 5/8-11 THREADED ROD

BEAM-WARE

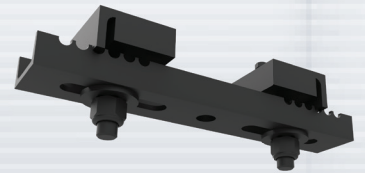


For Vertical Loading Only

## 2100 lb BEAM CLAMP

Standard, pre-engineered channel style beam clamps anchor to a building's beam structure and offer a safe and predictable method for suspending objects from overhead. This channel style beam clamp is adjustable, mounts flush underneath the beam's flange and provides a centrally located mounting hole for use with many types of connections, including all-thread, yokes and U-Brackets, truss clamps, Unistrut, etc.

Use the BC3-8-0 channel style beam clamp to provide a load rated overhead rigging point from structural I-Beams with flange widths ranging between 3" and 8" (76-203mm). This beam clamp model provides a fast, easy and safe way to rig direct loads from overhead and a hand wrench is all that is required to secure this clamp.



### KEY FEATURES:

- ▶ Single center hang points for 1/2" to 5/8" dia. threaded rod.
- ▶ Provides safe load-rated hang points
- ▶ Clamps securely to beam flanges ranging from 3" - 8"

### OPTIONAL ACCESSORIES:

- ▶ See Threaded Rod Datasheet
- ▶ See Rigging Components Datasheet
- ▶ See Gimballed Beam Clamp

### SPECIFICATIONS:

**Material:** Structural C-Channel

**Finish:** Powder Coat

**Color:** Black

**Design Factor:** 5:1

**WLL:** 2100 lbs / 953 Kg.

**Shipping Weight:** 3.2 lbs / 1.45 Kg.

### PACKAGE CONTENTS:

**1 pc** 3"-8" Beam Clamp Channel

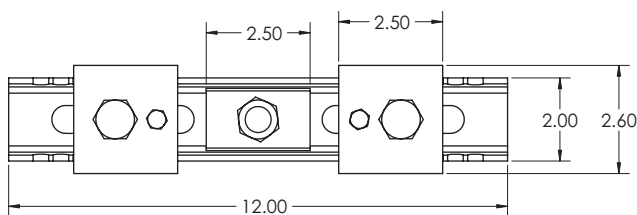
**2 pcs** Locking Angle Plate

**2 pcs** Flat Washer, 5/8"

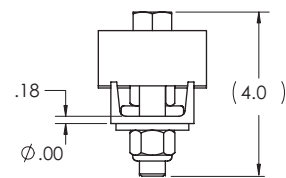
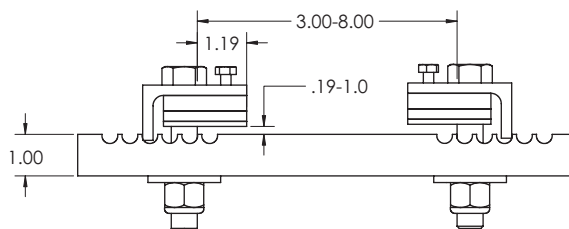
**2 pcs** Nyloc Nut, 5/8-11

### DIMENSIONS:

Top View



Side View



Rated for indoor use.

### ALWAYS INSTALL SAFETY CABLES

**WARNING:** Mounting and/or suspension of audio and video equipment requires experienced professionals. Improperly installed loudspeakers can result in property damage, personal injury and/or liability to the installing contractor.