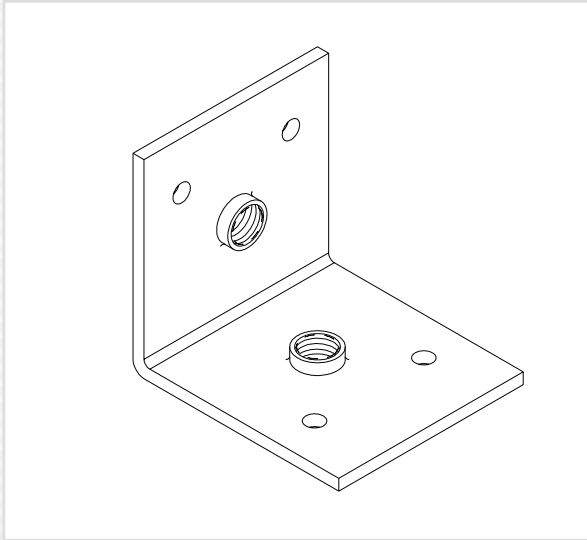


# CB-375-02

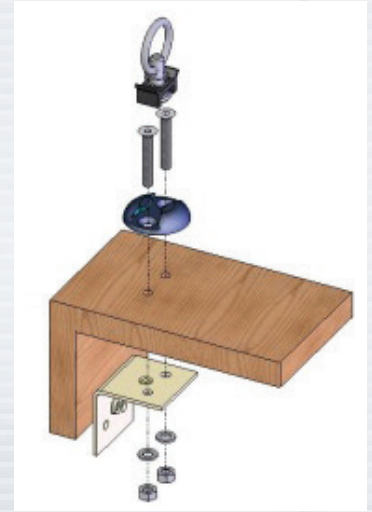
(491 lb. WLL)

INTERNAL CORNER BRACE

INTERNAL BRACE



The CB Series internal braces secure cabinet panels together to serve as a mechanical back up to the joinery in woodworking.. They anchor to the panels by way of flat head screws and also serve as an internal support for suspension hardware such as eyebolts, OSR fittings and single stud anchor plates.



### SPECIFICATIONS:

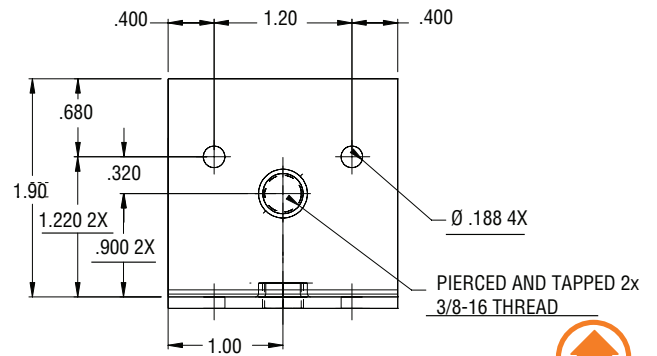
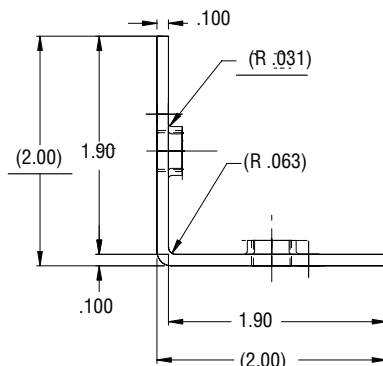
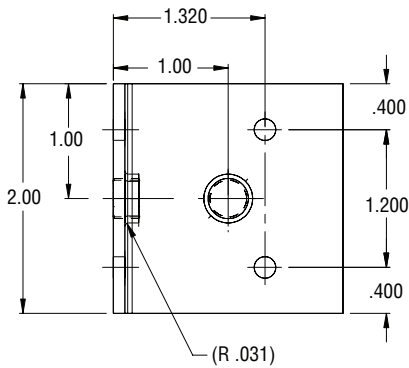
**Diameter:** -

**Color:** Yellow Zinc

**Design Factor:** 5:1

**WLL:** 491 lb / 222.7 Kg

*Based on .75 MDF Board*



Rated for indoor use.

### ALWAYS INSTALL SAFETY CABLES

**WARNING:** Mounting and/or suspension of audio and video equipment requires experienced professionals. Improperly installed loudspeakers can result in property damage, personal injury and/or liability to the installing contractor.