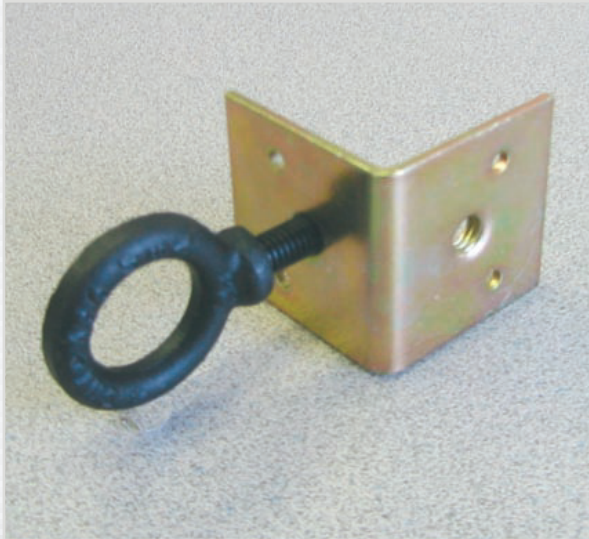


# CB-M10-02

# 246 lb. WLL

## LOUDSPEAKER FLY POINT BRACKET

## CB-SERIES



This Internal Brace provides a quick, simple and inexpensive way of providing fly point attachments to loudspeaker cabinets while adding cabinet integrity by securing the panels to each other.

These alloy steel angle brackets serve as braces, joining side panels to top, bottom and back panels. The additional bracing helps to prevent catastrophic cabinet failures that can occur from such causes such as joint fatigue, particle board fracturing and plywood delamination when cabinets are suspended and operated for prolonged periods.

Each Internal Brace is formed from rugged alloy steel plate. The threaded housing is tapered and actually adds strength as a perpendicular load is applied from the outside. Internal Brace reinforcement can also improve the sonic performance of the cabinet by reducing or eliminating cabinet vibration and providing additional ring mode decoupling.

Standard American and Metric threads are available, as well as matching forged eyebolts and flat head black zinc plated cabinet screws.

### STANDARD FEATURES:

- ▶ Tapered thread housing – builds strength as force is applied
- ▶ All host material – no fittings that can fall out
- ▶ Tack down holes – bracket may be tacked, screwed or glued
- ▶ American and metric threads available
- ▶ Color coded to identify differing thread sizes

### OPTIONAL ACCESSORIES:

- ▶ Flat head screws
- ▶ Drop forged eyebolts

### SPECIFICATIONS:

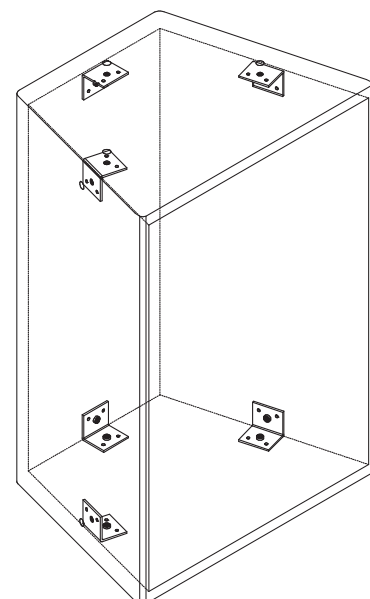
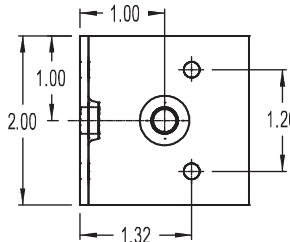
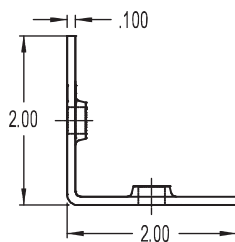
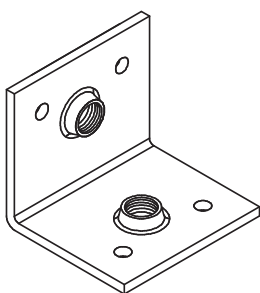
**Descriptions:** M10 x 1.5 mm Internal Brace (bright zinc)

**WLL Per Point:** 246 lb. / 112 Kg

**Design Factor:** 10:1

**Weight:** .21 lb. / .09 Kg

**Ship Weight:** 22 lb. / 10 Kg



**Destructive testing establishes that enclosures fail prior to achieving the elastic yield point of the internal brace.**

**Destructive test results available upon request.**