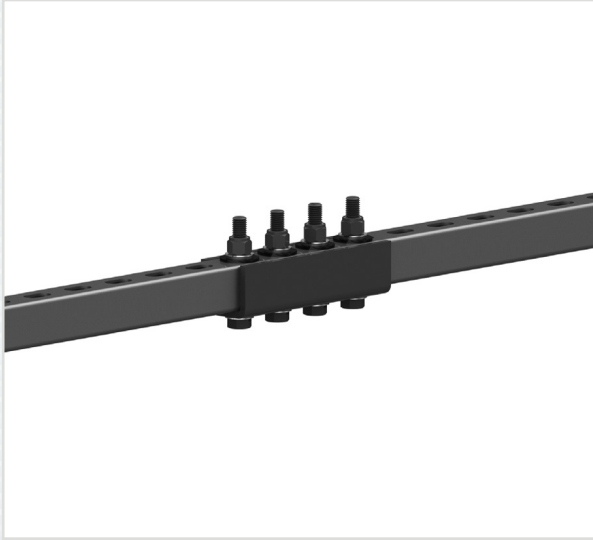


CG-P1377-JB

(252 lb. WLL)

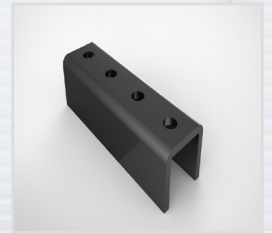
VIBRATION ISOLATED CHANNEL STRUT JOINER BRACKET

STRUT ATTACHMENT



JOINER BRACKET

The CG-P1377-JB safely joins together U-channels in order to support overhead speaker grid systems. This joiner bracket can be extended with wire rope assemblies, to ensure an extra safety for example in earthquake sensitive areas.



KEY FEATURES:

- ▶ Safe and load rated
- ▶ Joins Multiple Channel Strut

OPTIONAL ACCESSORIES:

- ▶ See Eye Nut Datasheet
- ▶ See Threaded Rod Datasheet

SPECIFICATIONS:

Material: Structural Steel
Finish: Bright Zinc
Color: Silver
Design Factor: 7:1
WLL: 252 lbs / 114.5 Kg
Shipping Weight: 3.95 lbs / 1.90 Kg.

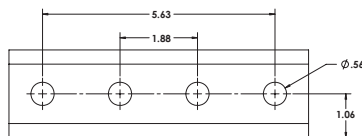
PACKAGE CONTENTS:

1 pc Joiner Bracket
4 pcs Hex Bolt, 1/2-13x3.5"
8 pcs Sound Isolation Washer
4 pcs Flat Washer, 1/2"
4 pcs Nyloc Nut, 1/2-13

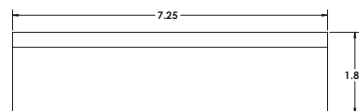
DIMENSIONS:

CG-P1377-JB
Joiner Bracket

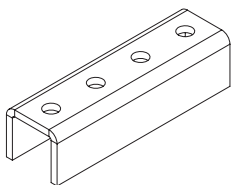
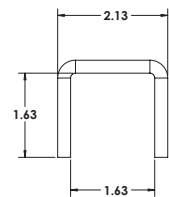
Top View



Side View



Front View



Rated for indoor use.

ALWAYS INSTALL SAFETY CABLES

WARNING: Mounting and/or suspension of audio and video equipment requires experienced professionals. Improperly installed loudspeakers can result in property damage, personal injury and/or liability to the installing contractor.