

FP-AM4212-2X1

(400 lb. WLL)

CLUSTER PACK PLANAR ARRAY KIT

FASPAC™



Clustering and flying AM4212 & AM6212 series loudspeakers is easy, safe and very predictable. This planar array suspension kit joins two AM4212 or AM6212 cabinets together to be flown as one, tight-packed for near field placement or splayed out for further distances from the audience.

Two top plates and two bottom plates are included in the kit along with load rated eyebolts that anchor into the speaker's rigging points and provide the actual suspension. High strength bolts are provided to secure the joiner plates.



SPECIFICATIONS:

Material: Structural Steel

Finish: Powder Coat

Colors: Black

Design Factor: 5:1 ratio

Working Load Limit: 400 lb. / 182 Kg.

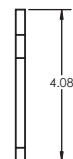
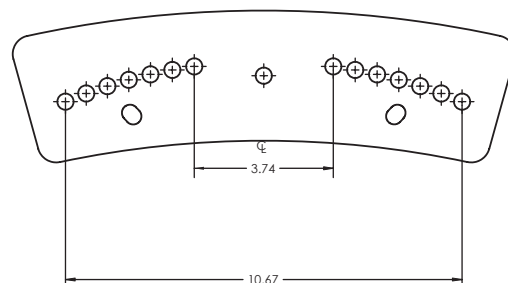
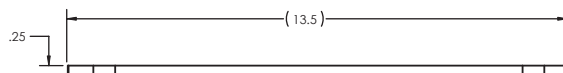
Shipping Weight: 13 lb. / 5.9 Kg.

PACKAGE CONTENTS:

4pcs Joiner Plates

4pcs Eyebolt, M10X35mm

1pc Hardware Kit



Rated for indoor use.

ALWAYS INSTALL SAFETY CABLES

WARNING: Mounting and/or suspension of audio and video equipment requires experienced professionals. Improperly installed loudspeakers can result in property damage, personal injury and/or liability to the installing contractor.