

MM-010-BT

(25 lb. WLL)

PAN & TILT SPEAKER WALL MOUNT

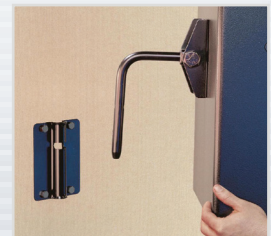
MULTIMOUNT®



This universal speaker mount supports loudspeakers weighing up to 25 lbs./11.3 kg, and attaches them to walls, ceilings, overhangs, and other structural surfaces.

Using its independent pan, tilt, and clockwise adjustments, loudspeakers can be aimed and locked into almost any direction and angle.

In addition, the MultiMount's speaker ad standard one and two hole mounting patterns. MultiMount's unique support arm also acts as a convenient carrying handle during installation. Once the arm has been inserted into the mounting plate, the installer's hands are free to complete the wiring and positioning process.



STANDARD FEATURES:

- ▶ Separate pan, tilt and clockwise rotations
- ▶ Infinite aiming and locking angles
- ▶ No “memory” or “drift”
- ▶ Accommodates speakers with 2 hole mounting patterns, including 2 inch and 2-3/8 inch

OPTIONAL ACCESSORIES:

- ▶ PoleStar™ PM-010 pole adapter
- ▶ Safety cables (many standard lengths)

SPECIFICATIONS:

Material: Structural Steel Alloy

Finish: Anodize/Powder Coat

Color: Black

Design Factor: 10:1 ratio

WLL: 25 lbs. (11.3 Kg) max

Net WGT: 1 lb. (2.2 Kg.) each

Shipping WGT: 3 lbs. (6.6 Kg)/pair

Pack Count: 2 units/carton

PACKAGE CONTENTS:

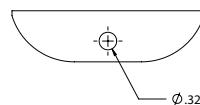
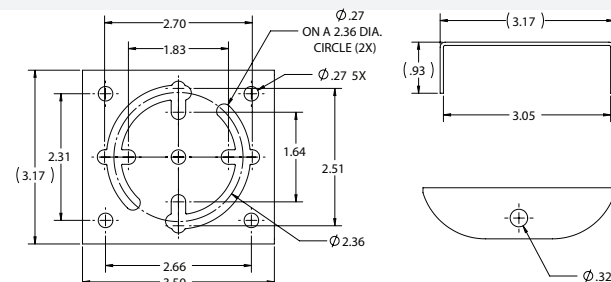
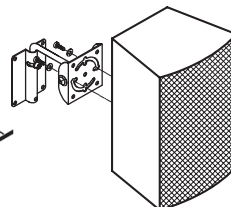
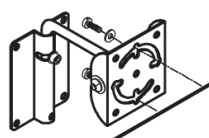
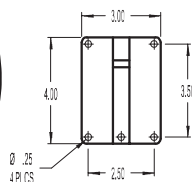
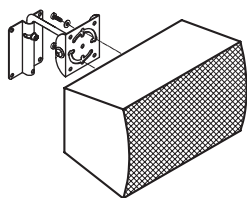
1 pc Wall Mounting Plate

1 pc Speaker Adapter

1 pc Support Arm Assy

1 pc Hardware Kit

DIMENSIONS:



HORIZONTAL ORIENTATION

VERTICAL ORIENTATION



Rated for indoor use.

Adaptive Technologies Group
1635 E. Burnett Street | Signal Hill, CA 90755 USA
Ph: 562.424.1100 | Fax: 562.424.3520
www.adapttechgroup.com



ADAPTIVE
TECHNOLOGIES GROUP

ALWAYS INSTALL SAFETY CABLES

WARNING: Mounting and/or suspension of audio and video equipment requires experienced professionals. Improperly installed loudspeakers can result in property damage, personal injury and/or liability to the installing contractor.