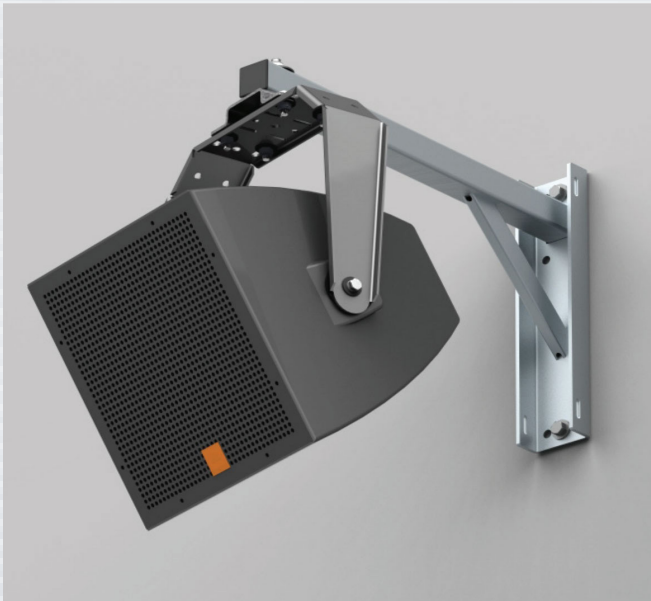


SAS-200-24-G

200 lb. WLL

LOUDSPEAKER SUSPENSION & AIMING SYSTEM

Steerables®



The SAS-200-24 is an efficient, load rated universal wall arm system for mounting objects, such as loudspeakers weighing up to 200 lb/91 kg to walls & other vertical structures. Loudspeaker can easily be attached and aimed from walls and other vertical structures by way of the U-bracket or Yoke with ease of installation and flexibility in adjustment.

This all structural steel alloy assembly is ready to accommodate most Yoke or U-brackets mounts. The SAS-200-24 comes with hardware and is available in a black, powder coat finish for indoor use or galvanized finish for outdoor use.



STANDARD FEATURES:

- ▶ Accommodates loudspeaker, lighting and theatrical Yoke mounts
- ▶ Mounts to walls and other vertical structural surfaces
- ▶ Significant reductions in installation and planning time
- ▶ Minimal wall surface area required
- ▶ Accommodates standard Yoke and U-Series brackets

OPTIONAL ACCESSORIES:

- ▶ See Safety Cable datasheet

SPECIFICATIONS:

Materials: Structural Steel only

Finish: Galvanized

Color: Silver

WLL: 200 lb. / 91 kg

Design Factor: 7:1 ratio

Net Weight: 16 lb. / 7.3 Kg

Shipping Weight: 18 lb. / 8.2 Kg

Pack Count: 1 per carton

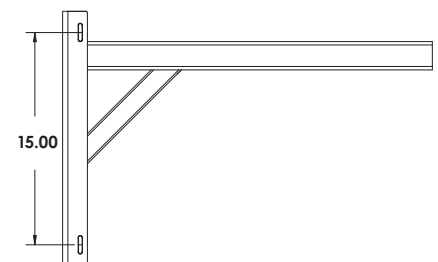
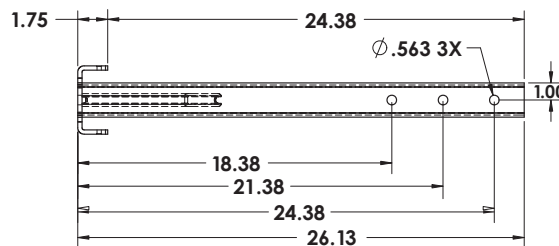
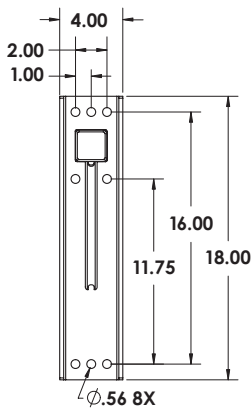
PACKAGE CONTENTS:

1 pc. Wall arm

1 pc. Hardware Kit

Hardware for mounting to the wall structure is not included.

Tilt mechanism is sold separately



Adaptive Technologies Group
1635 E. Burnett Street | Signal Hill, CA 90755 USA
Ph: 562.424.1100 | Fax: 562.424.3520
www.adaptivetechgroup.com



ALWAYS INSTALL SAFETY CABLES

WARNING: Mounting and/or suspension of audio and video equipment requires experienced professionals. Improperly installed loudspeakers can result in property damage, personal injury and/or liability to the installing contractor.