

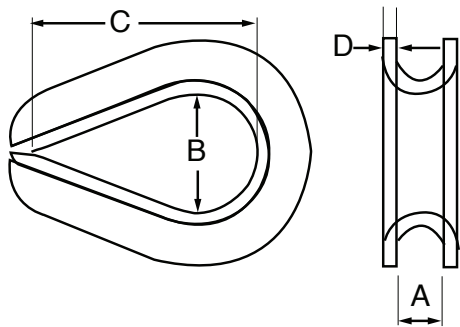
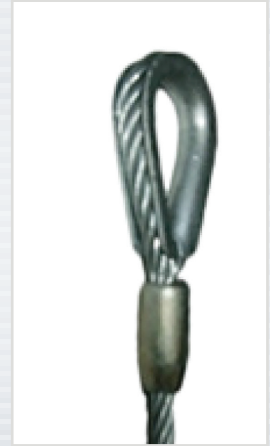
Thimbles

WIRE ROPE THIMBLES

WIRE ROPE HARDWARE



When a wire rope is terminated with a loop, a steel thimble is inserted in the eye to keep the rope from bending at too small of radius and damaging the rope. Thimble eyes also protect the wire rope from direct contact of other hardware and reducing wear and tear on the wire rope.



SPECIFICATIONS:

Materials: Galvanized Steel
Diameter: See Chart
Finish: Galvanized
Color: Silver

PACKAGE CONTENTS:

Comes in packages of 50 and 100

MODEL #	A	B	C	D
THIMBLE125	.22" - 5.5mm	.70" - 17.7mm	1.3" - 33mm	.04" - 1.016mm
THIMBLE188	.26" - 6.6mm	.70" - 17.7mm	1.3" - 33mm	.04" - 1.016mm
THIMBLE25	.28" - 7mm	.70" - 17.7mm	1.3" - 33mm	.05" - 1.27mm



Rated for indoor use.

ALWAYS INSTALL SAFETY CABLES

WARNING: Mounting and/or suspension of audio and video equipment requires experienced professionals. Improperly installed loudspeakers can result in property damage, personal injury and/or liability to the installing contractor.