

HoverTrack® Series

VWD-3X2-X462

3 wide x 2 deep Video Wall Display Installation Guide

This display kit mounts NEC X461UN and X462UNS LCD monitors in a 3 wide by 2 deep landscape configuration. The frame attaches to a wall and receives the LCD monitors by way of four machined fittings (per monitor) that thread into the monitor's VESA holes. These fittings then insert into the frame's channels. The monitor's fittings secure to the frame with locking arms that provide an easy way to remove the monitors for service. A removable panel provides access for media players behind the frame.

Important: Installing video displays is a serious endeavor that requires experienced professionals. **Improperly prepared walls and other structures as well as the equipment being installed can result in property damage, injury, death and/or liability to the installing contractor.** Do not proceed if any part of the installation is in doubt.

Caution: Due to the wide variety of structures, environments, materials and installation methods, the installing contractor must exercise good judgment in selecting the proper mounting area. The mounting structure must be capable of supporting at least 5 times the load of the installed equipment. Consult local building codes for further guidance.

Follow these instructions for the most efficient and safest mounting results.

Package Contents:

- 1 pc Left frame w/ locking arms
- 1 pc Right frame w/ locking arms
- 1 pc Lower center H-channel
- 3 pcs Joiner bracket
- 2 pcs Media player mounting bracket
- 24 pcs Phillips flat head screw, M6-25mm long
- 24 pcs Upper-lower stand-off button (black)
- 24 pcs Nylon washer spacers, .281Dx .74OD, white
- 24 pcs Philips flat head screw, M4x20mm" long (for joiner plate)
- 1 pc Instruction sheet

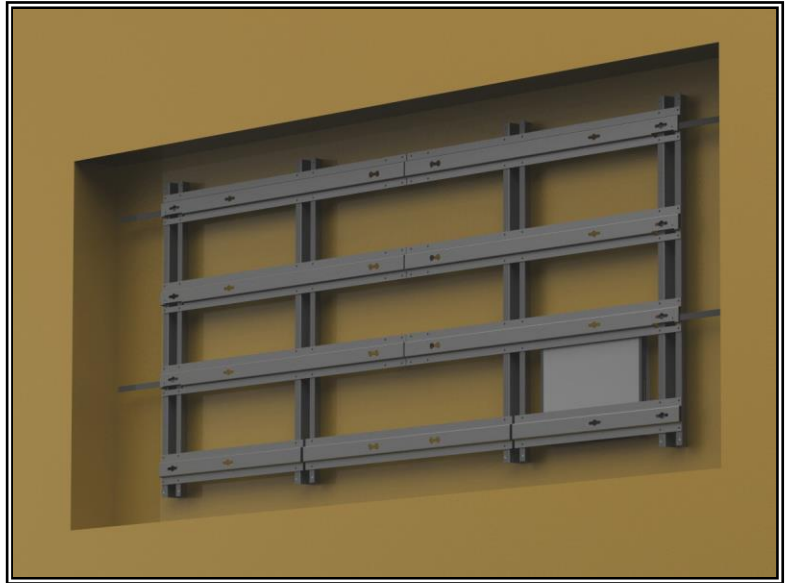
Notes:

Hardware to mount frames to wall are not included.

Step 1: Assemble Video Wall Frame

Place the left side frame on a level floor. Attach the three joiner brackets to the right-side ends of the horizontal channels using the provided M6 x 20mm long flat head screws (Figure 1).

Place the right-side frame alongside the left-side frame and align its horizontal channels with the joiner brackets. Attach the right-side frame to the joiner brackets using the supplied M6 x 20mm long flat head screws (**Figure 2**).



3 Wide x 2 Deep Video Wall Display (Rear View)

Step 2: Attach lower center channel

Attach the lower center channel between the left and right frames using the provided M6 x 20mm long flat head screws (Figure 3).

Note: The assembled frame weighs approximately 115 lb/52.3 Kg and requires two installers to mount it to the wall.

Step 3: Mount Frame to Wall

Scribe a horizontal line on the wall showing the exact location of where the top edge of the upper left monitor will be. Measure down 1.8" (45.9 mm) from that line and scribe another horizontal line showing where the top edge of the mounting frame will be (Figure 4).

Scribe a vertical line showing where the left side of the upper monitor will be. Measure to the right and scribe another vertical line 10.5" (267mm) from the monitor's left vertical line to locate the left edge of the mounting frame (Figure 4).

Using a level, place the upper section of the frame up to the vertical and horizontal mounting frame scribe lines. Use the frame as a template to mark the eight primary mounting key-holes. Place the frame back on the floor and install wall fasteners, leaving at least 1/4" (7mm) of the bolt's shaft exposed.

Replace and level the mount on the wall and install additional wall fasteners to the top, lower horizontal slots and the center hole of the vertical mounting channel. Tighten wall fasteners permanently.

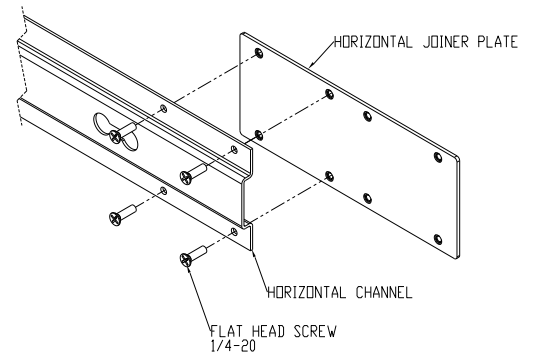


Figure 1

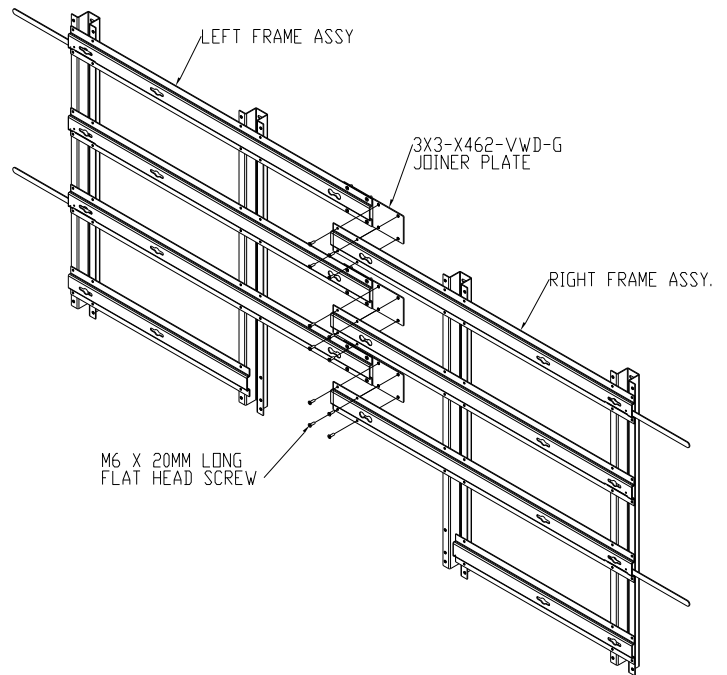


Figure 2

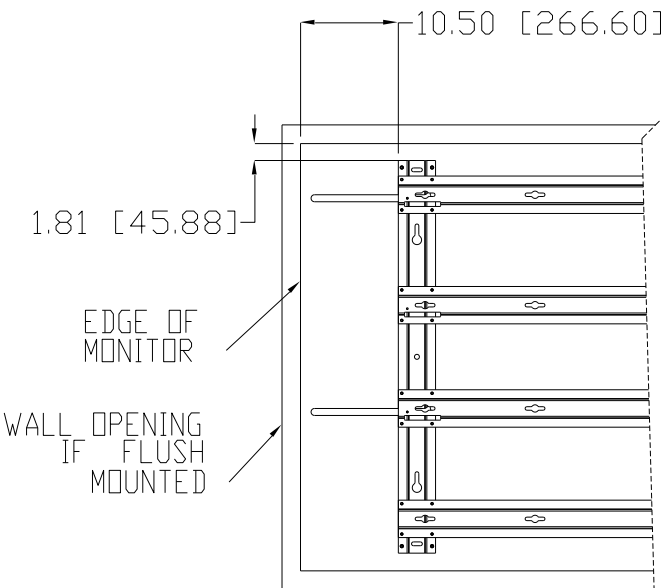


Figure 4

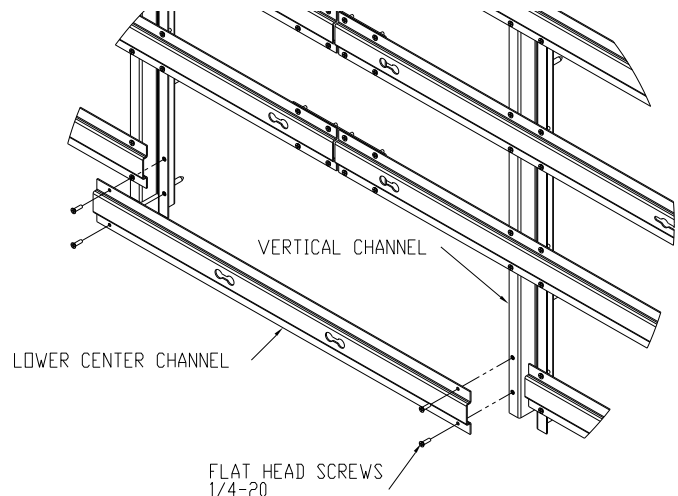


Figure 3

Step 4: Install Brackets to Media Player

Attach the media player brackets to the sides of the media player using its existing side screws (Figure 5).

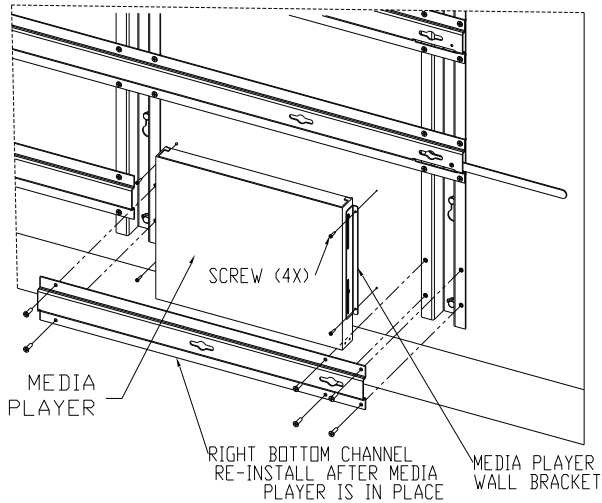


Figure 6

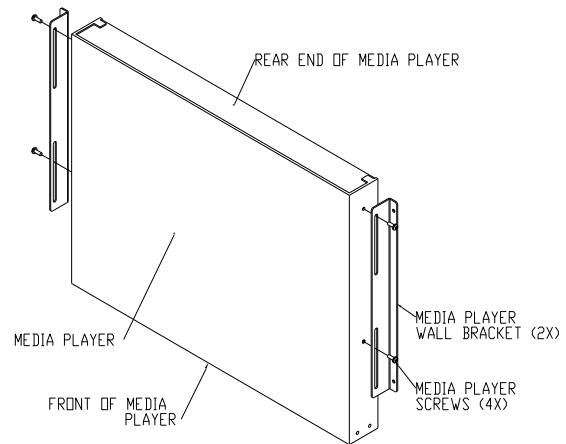


Figure 5

Step 5: Install Media Player

Choose and remove the bottom left or right horizontal channel by unscrewing its flat head screws (Figure 6). Install the media player between the two vertical channels to the wall using the appropriate fasteners in the media player's brackets (Figure 6). Re-install the bottom channel.

Step 6: Install upper stand-off buttons to monitors

Thread two stand-off buttons (black) into the top VESA mounting holes in the back of each monitor using the included M6 screws (Figure 7).

Step 7: Install lower stand-off buttons to monitors

Thread two stand-off buttons (black) into the bottom mounting holes in the back of each monitor with one nylon spacer in between the button and the back of the monitor. Tighten permanently (Figure 7).

Important: If the pitch of the monitor needs to be adjusted, add more nylon spacers between the top (or bottom) stand-off buttons and the monitor.

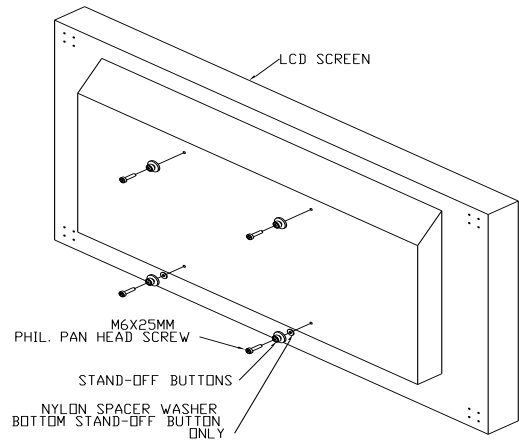


Figure 7

Step 8:

Lift up all the locking arm brackets for the monitor installation (Figure 11).

Step 9: Install Monitors to the Left Column

Starting with the upper left monitor, connect power and signal wires to each monitor then align its four stand-off buttons with the four large slots in the horizontal channels. Slide the monitor from left to right until it stops (Figure 8). Pull down on the locking arm bracket to lock monitor in place. Repeat step 9 for the lower monitor.

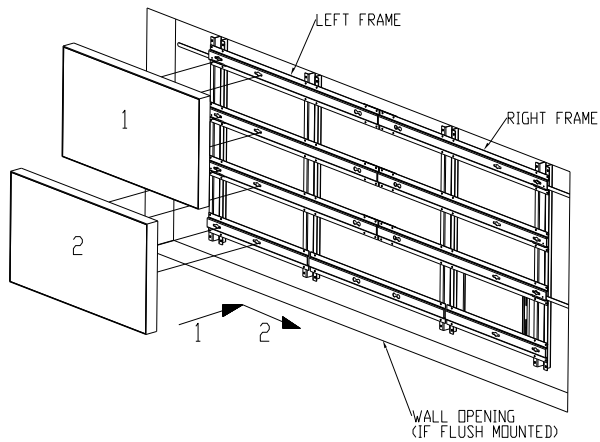


Figure 8

Note on Alignment:

While installing monitors, check for front and side alignment of the monitors. The surfaces of all monitors must be aligned and flush to each other. If one or more screens are tilted more than others, remove the screen(s) and, depending whether the monitor needs to be tilted forward or backward, apply additional nylon washers as necessary between the monitor and its machined fittings (**Figure 7**). Reinstall and recheck surface alignments. Repeat where necessary.

Step 10: Install Center Column Monitors

Starting with the top center monitor, connect the power and signal wires to each monitor then align its four stand-off buttons with the four large slots in the horizontal channels. Slide the monitor from right to left until it is snug against the left column monitor (**Figure 9**). Repeat step 10 for the lower monitor. Check for front and side alignments.

Step 11: Install Right Column Monitors

Starting with the upper right monitor, connect power and signal wires to each monitor then align its four stand-off buttons with the four large slots in the horizontal channels. Slide the monitor from right to left until it stops and the side is snug against the center column monitors (**Figure 10**). Pull down the locking arm bracket to lock monitor in place. Repeat step 11 for the lower monitor. Check for front and side alignments.

Servicing Tips

Right Column Monitor Removal

Reach fingers between the wall and the right monitor and lift up the locking arm bracket. Pull monitor to the right until its fittings disengage from the frame, then remove.

Center Column Monitor Removal

Reach fingers between the right side wall and the monitor to the right of the monitor being removed. Lift up the locking arm bracket to unlock monitor then slide the monitor to it extreme right position, about 1.6" /40 mm. Slide then pull the center monitor to the right until its fittings disengage from the frame, and then remove.

Left Column Monitor Removal

Reach fingers between the wall and the left monitor and lift the locking arm bracket to unlock. Slide monitor to the left until its fittings disengage from the frame, then remove.

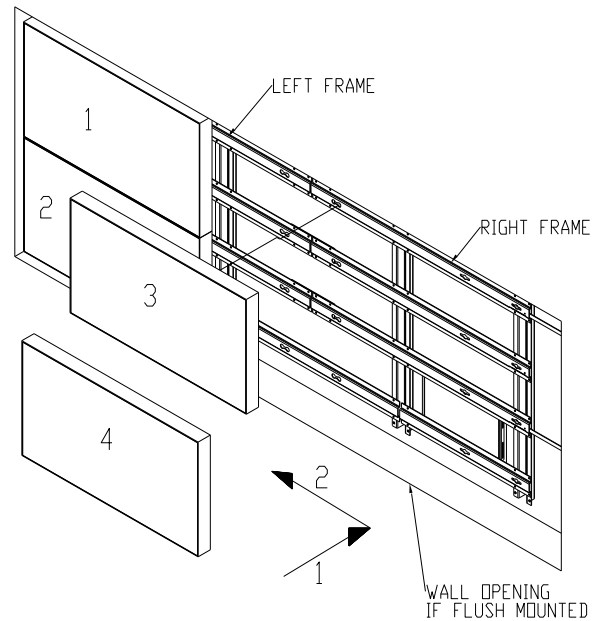


Figure 9

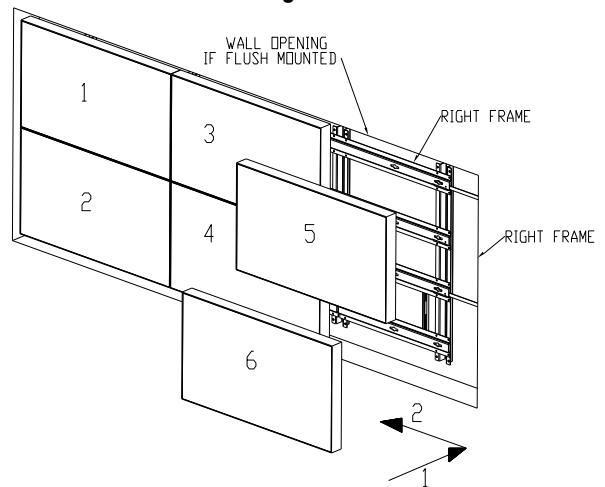


Figure 10

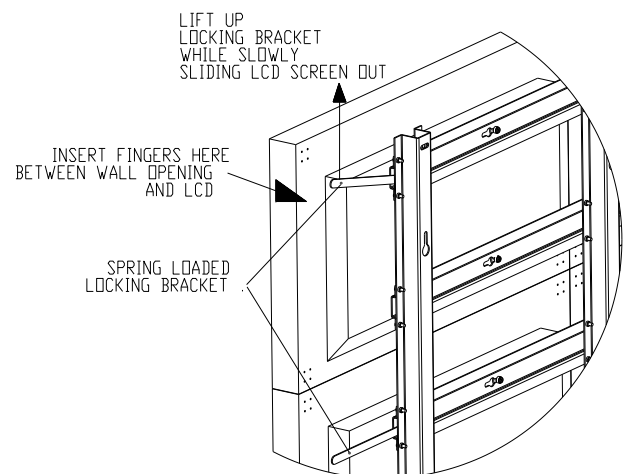


Figure 11

HoverTrack® Series

Assembly Installation Guide

VWD-3X2-X462

Important: Assembling video displays is a serious endeavor that requires experienced professionals. **Improperly assembled equipment can result in property damage, injury, death and/or liability to the installing contractor.** Contact manufacturer if any part of the assembly is in doubt.

Follow these instructions for the most efficient and safest assemble results.

Package Contents:

- 3 pcs 3X3-X462-VWD-A 3X Left H-Channel Slat
- 3 pcs 3X3-X462-VWD-B 3X Right H-Channel Slat
- 2 pcs 3X3-X462-VWD-C 3X-4X Lower Side H-Channel slat
- 1 pc 3X3-X462-VWD-D 3X Lower Center H-Channel Slat
- 4 pcs 2X2-X462-VWD-C 2X V-Channel Assy.
- 4 pcs 3X3-X462-VWD-F Lock Arm Bracket
- 4 pcs Nylon/friction washer, .28 IDx.74OD, white
- 4 pcs Phil. Pan head screw, M4-12mm long
- 4 pcs Nyloc nut, M4
- 64 pcs Flat head phil. Screw, M6x20mm long
(Attached to individual parts)



Step 1:

Check hardware to make sure it is complete to assemble the parts. Refer to package contents.

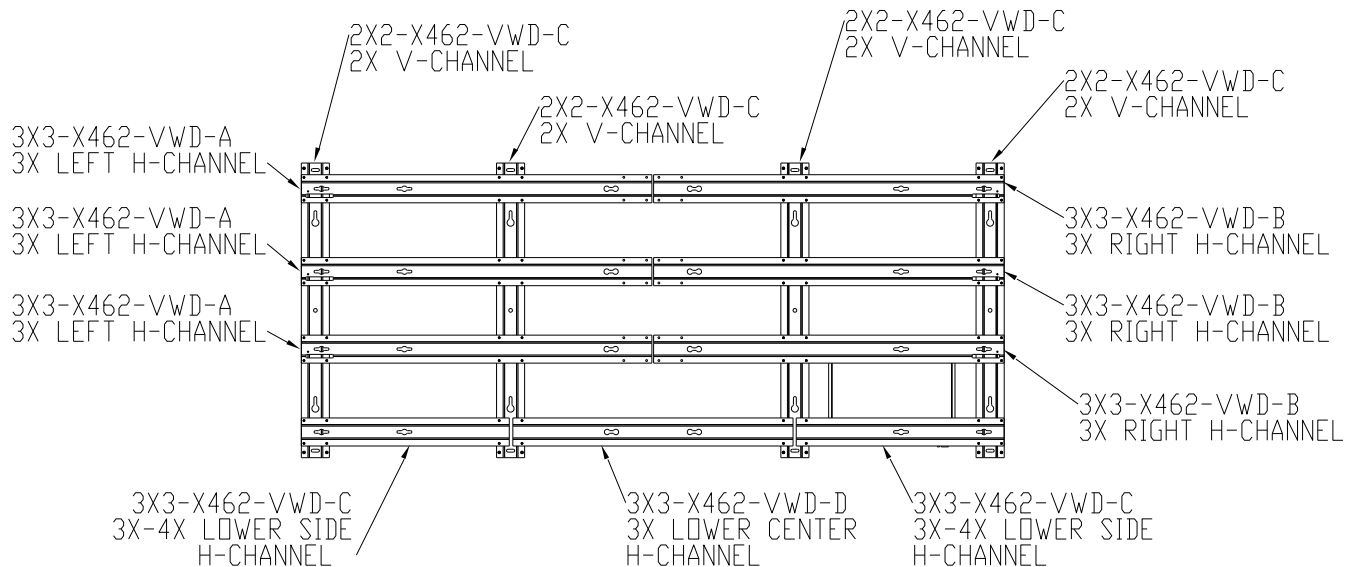


Figure 1

Step 2:

Lay all the parts on a flat floor to make sure all the parts are accounted for (Figure 1).

Start with placing the 2X2-X462-VWD-C 2X V-Channel on the floor facing up as shown in figure 1. Make sure the large hole of the key holes slots are all on the lower end and facing same direction.

Place THREE pieces of 3X3-X462-VWD-A left H-channel slat on the left side over the 2X2-X462-VWD-C with the horizontal keyholes facing up. Place the THREE pieces of 3X3-X462-VWD-B right H-Channel slat on the right side over the 2X2-X462-VWD-C with the horizontal keyholes facing up (Figure 1).

Place a 3X3-X462-VWD-C 3X-4X lower side H-channel slat on the lower right side and one on lower left side of the frame. Place a 3X3-X462-VWD-D 4X lower center H-Channel slat on the lower center of the frame (Figure 1).

All the ends (3X3-X462-VWD-A and 3X3-X462-VWD-B) with the rectangular slots should be on the sides and lower end of the frame (figure 2).

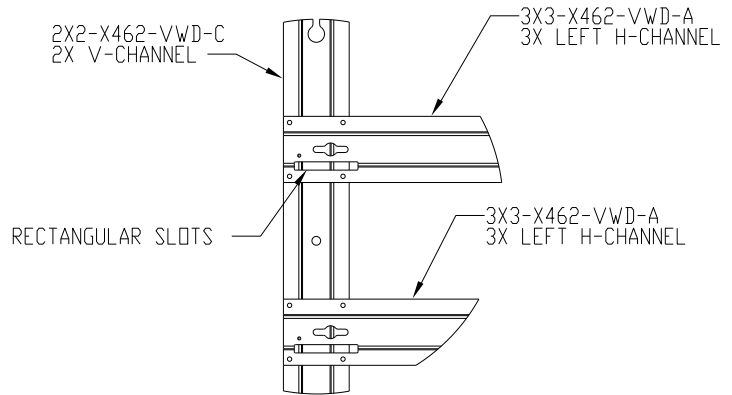


Figure 2

Step 3: Install Locking Arm brackets

Assemble the 3X3-X462-VWD-F lock arm bracket on TWO of the 3X3-X462-VWD-A left H-channel and TWO on the 3X3-X462-VWD-B right H-channel using the provided M4 screws, 1/4" nylon/friction washer and M4 nylock nut (Figure 3). The lock arm brackets must be installed on the first and third horizontal channel slats starting from the top (Figure 4). Tighten screw to achieve friction on the lock arm bracket.

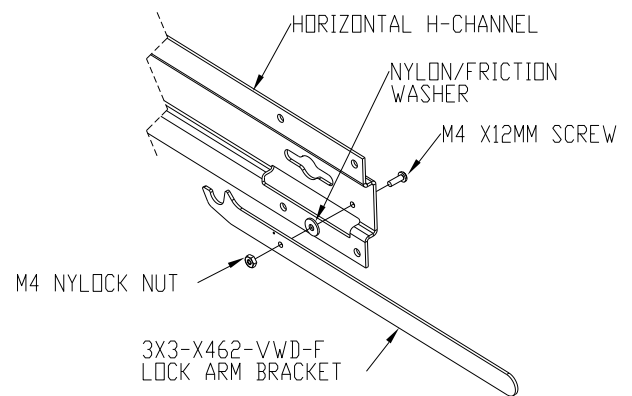


Figure 3

Step 4:

Attach horizontal slats, (3X3-X462-VWD-A, 3x3-X462-VWD-B and 3X3-X462-VWD-C), on the vertical channels using the provided M6x20mm long flat head Philips screws. Do not tighten screws until all screws are installed (Figure 5 & 6).

Note:

The 3X3-X462-VWD-D 3X lower center H-Channel will be installed after the left and right frames are installed on the wall. Refer to product installation guide

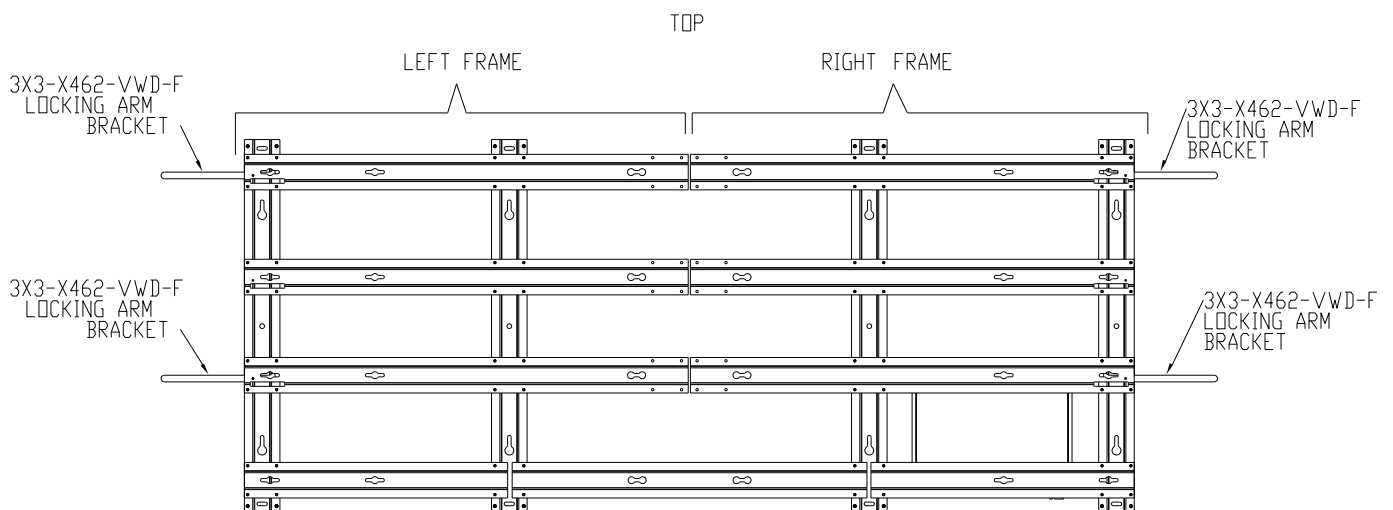


Figure 4

Step 5:

Check squareness of the each frame then tighten all screws permanently.

Step 6:

Refer to product installation guide installation.

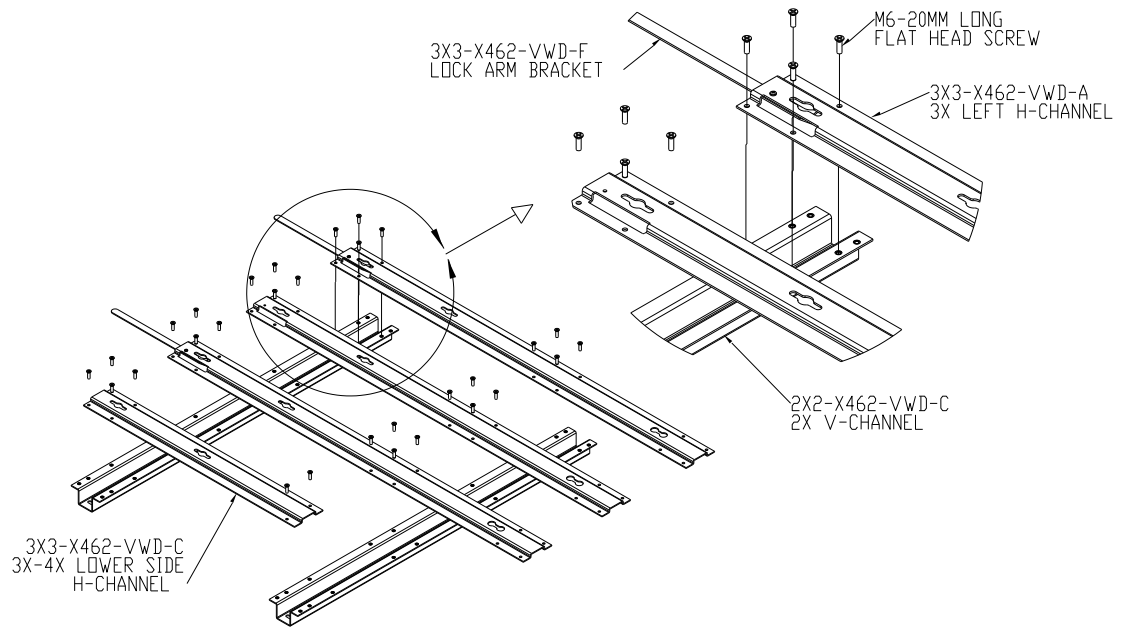


Figure 5 (LEFT FRAME)

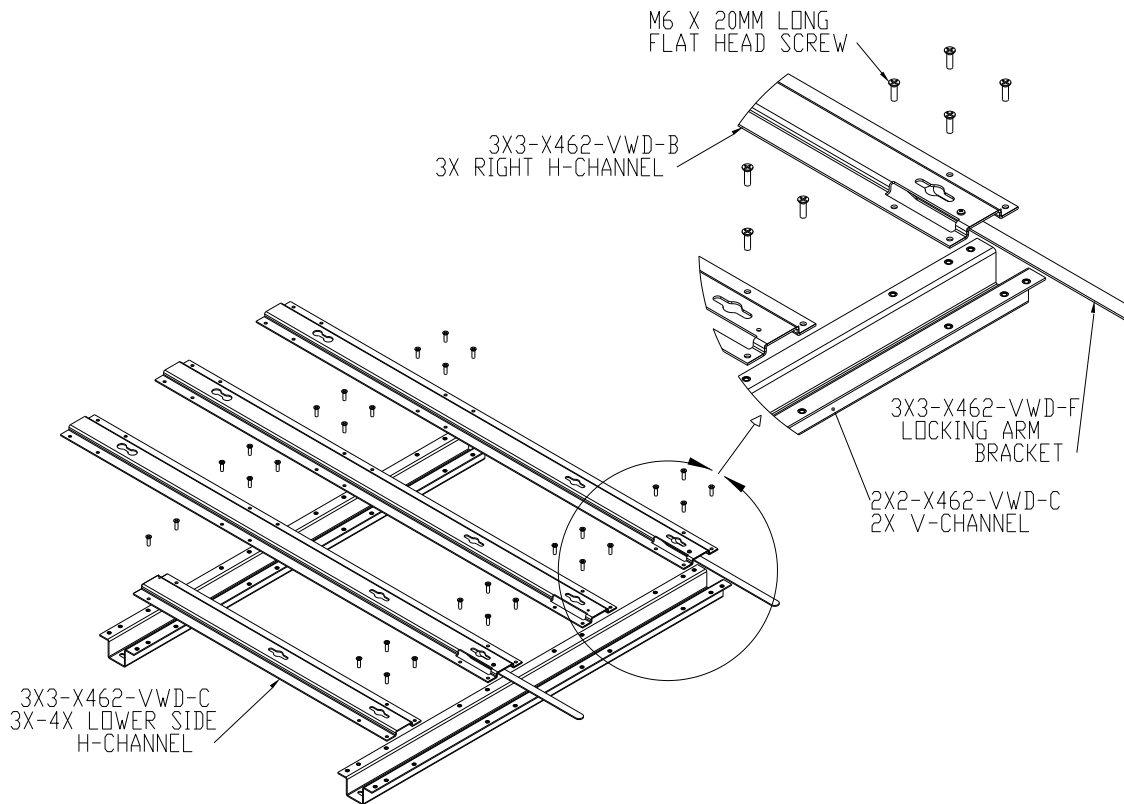


Figure 6