

# HoverTrack® Series

## Assembly Installation Guide

# VWD-4X2-X462-4X-FS

## 4 Wide Video Wall Floor Stand

This video wall floor stand display the NEC X461 and X462 monitors in a 4 wide by 2 deep or 4 wide x 3 deep landscape configuration. The video frame easily attaches to vertical column by way of bolts and nuts. The floor stand comes with adjustable feet to compensate for any unlevelled flooring.

**Important:** Installing video displays is a serious endeavor that requires experienced professionals. **Improperly assembled floor stands and other structures as well as the equipment being installed can result in property damage, injury, death and/or liability to the installing contractor.** Do not proceed if any part of the installation is in doubt.

**Caution:** Due to the wide variety of structures, environments, materials and installation methods, the installing contractor must exercise good judgment in selecting the proper area. The base structure must be flat and capable of supporting the height of the video wall display. Consult local building codes for further guidance.

**Follow these instructions for the most efficient and safest mounting results.**

### Package Contents:

3 pcs	4X2-X462-4X-FS-A Vertical column Assembly
8 pcs	4X2-X462-4X-FS-B Horizontal Brace Assembly
6 pcs	Adjustable leveler foot, 1/2-13 thread
13 pcs	Hex bolt, 3/8-16 x 5" long, black
48 pcs	Hex bolt, 3/8-16 x 3.25" long, black
122 pcs	Flat washer, 3/8 SAE, black
61 pcs	Nyloc nut, 3/8-16, black
6 pcs	End cap, 2 x4, black

### Step 1:

Before starting assembly, check included parts list to make sure all hardware are accounted for.

### Step 2:

Attach the end caps to both ends of the base tubes (Figure 1).

### Step 3:

Screw in the Adjustable leveler foot into the two weld nut under the base tube (Figure 1).

### Step 4:

Connect two horizontal brace's plates to the bottom side of the right vertical columns using the provided 3/8-16 x 3.25" long hex bolt, flat washer and nuts. Snugly tighten bolts (Figure 2).



**Step 5:**

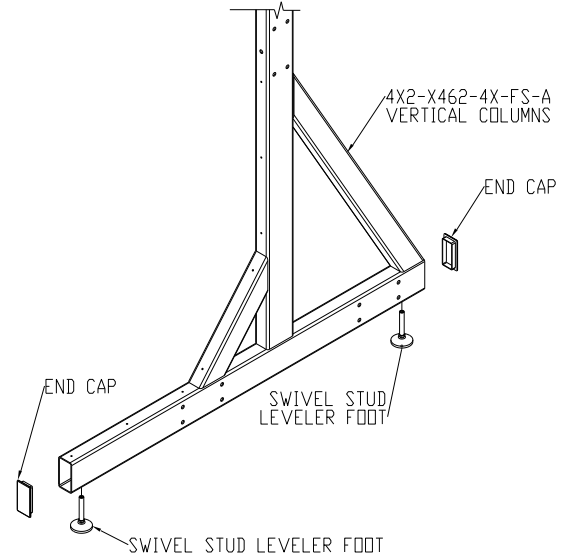
Attach the other end of the horizontal brace's plate to the center vertical column side. Insert bolts through the horizontal brace's plate and into the side holes of the vertical column's base. Position another horizontal brace on the other side of the center verticals column then secure three pieces together using the provided bolts, washers and nuts. Snugly tighten bolts (Figure 2)

**Step 4:**

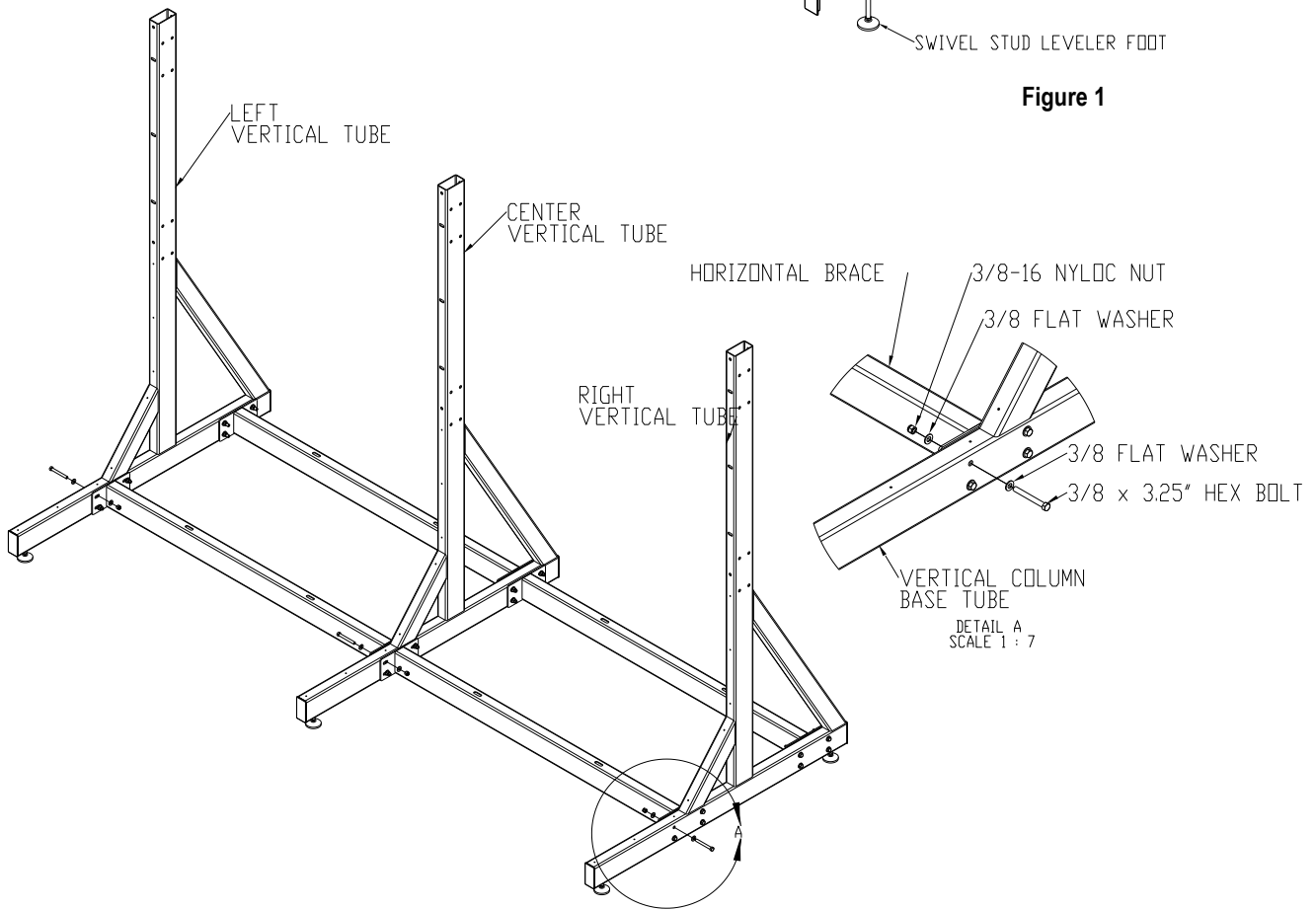
Attach the left vertical column to the end of the horizontal brace's plate and the secure with the included bolts, washer and nuts (Figure 2).

**Step 5:**

Attach a horizontal brace to the middle and top of the vertical columns (Figure 3). Snugly tighten bolts.



**Figure 1**



**Figure 2**

**Step 6:**

Adjust the horizontal braces so they will line up with each other. The slots on the middle horizontal brace must line up with the holes on the vertical columns (Figure 4). Use a Level to horizontally level the horizontal braces.

**Step 7:**

Line up the fronts of the three vertical columns. You can stretch the string from the left vertical column to the right vertical column and they should be straight and evenly touches the fronts of the tubes. Once they are line up tighten bolts permanently.

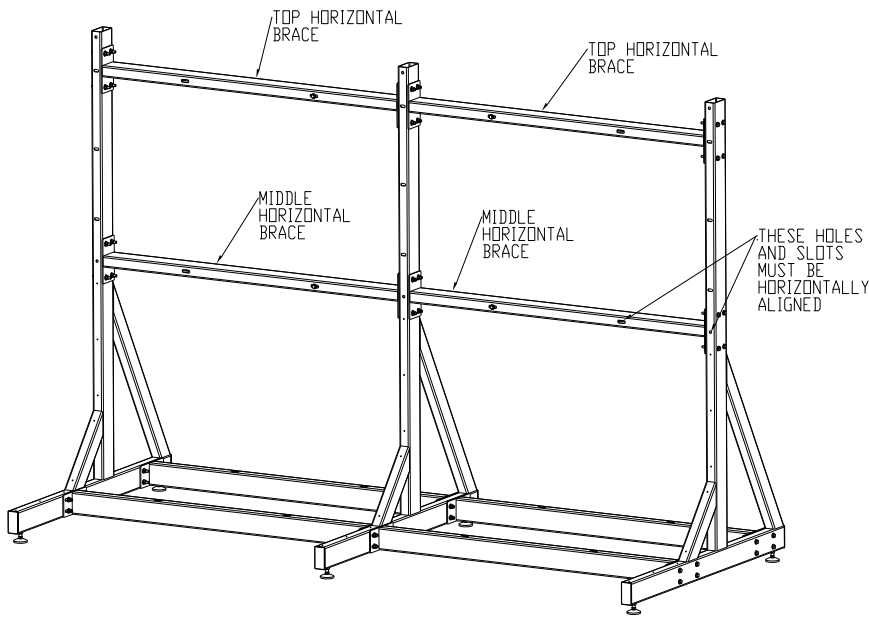


Figure 3

**Step 8:**

Adjust the adjustable leveler foot to level and plum of the stand.

**Step 9: Install Video Wall Frame**

Lift the assembled Video frame to the front of the stand. Align and match the holes and slots of the video frames outer most vertical channels and the center channel to the stand vertical columns' holes. Secure the frame to the stand permanently using the provided bolt, washers and nuts as shown figure 5. Use three bolts, washer and nuts per vertical channel (Figure 5).

Secure the two vertical channels closes to the center to the stand's horizontal brace (Figure 5).

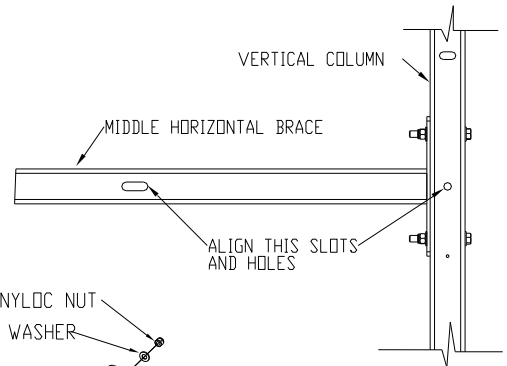


Figure 4

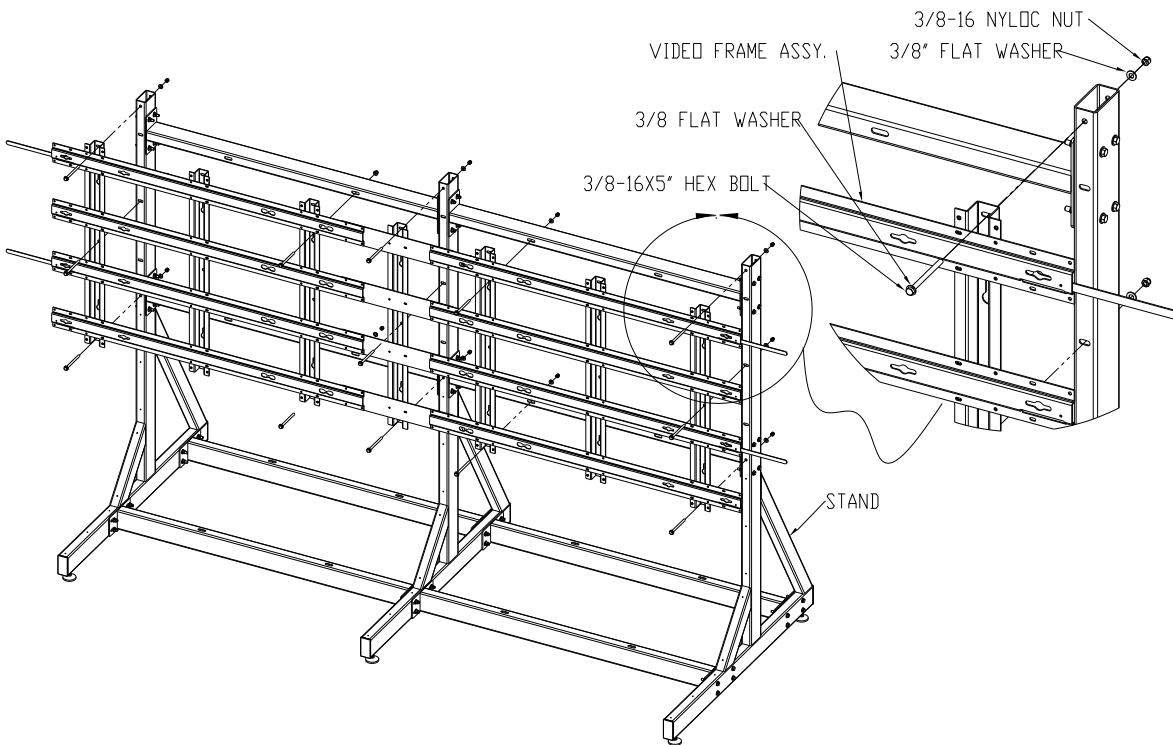


Figure 5